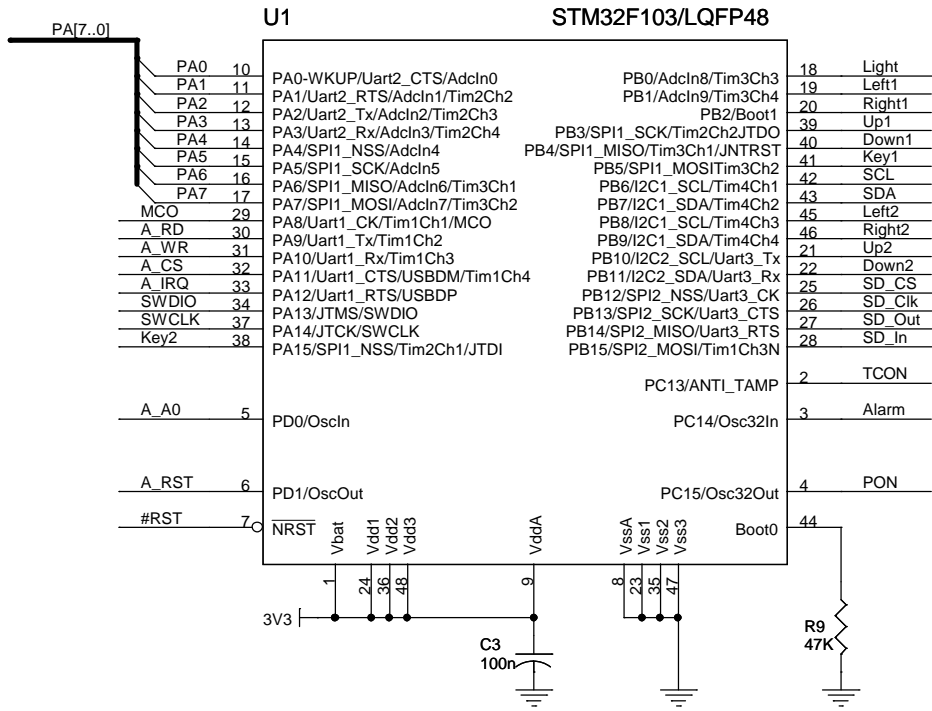
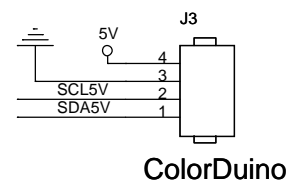


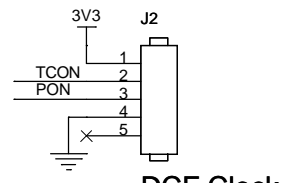
RTC Clock



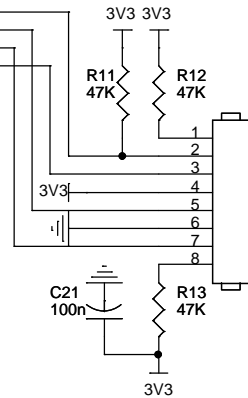
STM32F103/LQFP48



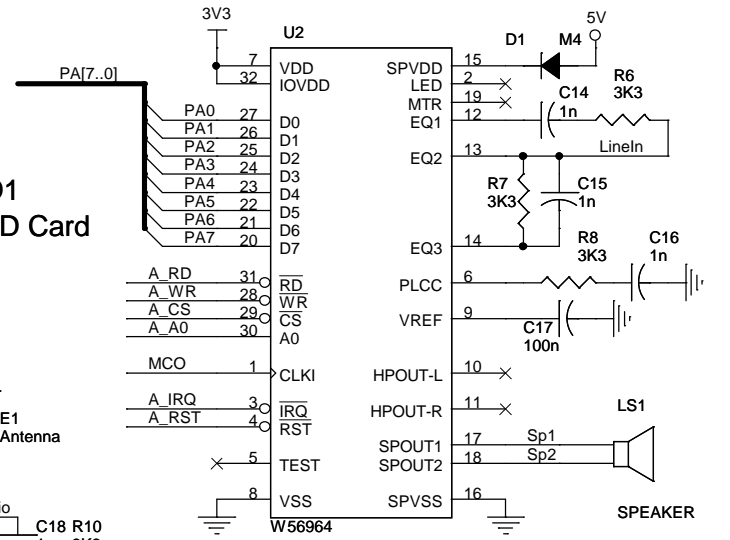
ColorDuino



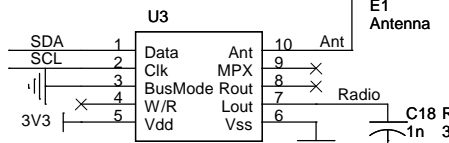
DCF Clock



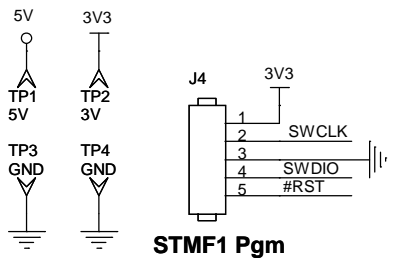
SD1 uSD Card



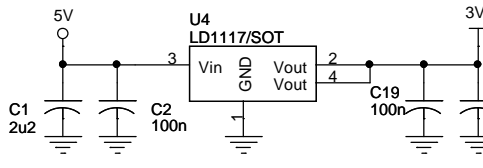
SPEAKER



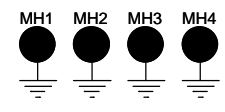
TEA5767/TJ-102BC



STM1 Pgm



LD1117/SOT



Title		
Colorduino RGB clock / FM radio		
Size	Document Number	Rev
A4	Emil	0.2
Date:	Wednesday, December 20, 2017	Sheet 1 of 1