

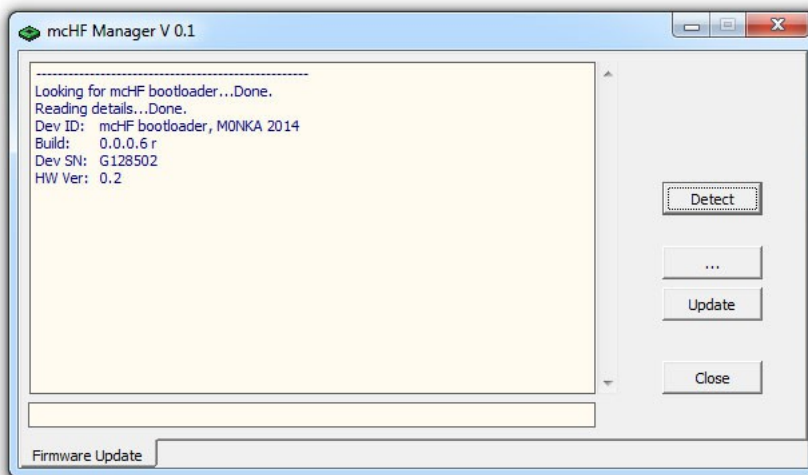
Firmware Upgrade

Upgrading of the mcHF firmware is done via small Windows utility, called mcHFManager. You can download it at the bottom of this page. When you plug the mcHF in bootloader mode for the first time to your computer, you will need to install a driver. This comes usually with Windows, the rest of the files are in the zip, together with the utility in the drivers directory. Just use manual driver install from the Device Manager in Windows and point to this directory.

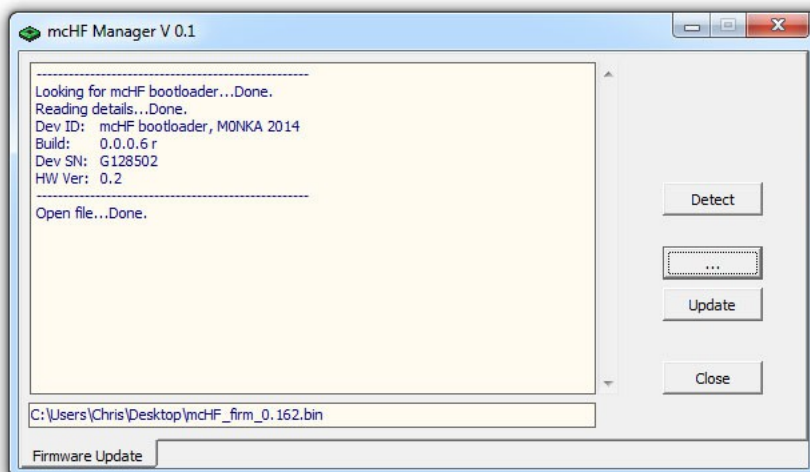
Enter bootloader mode

- Power off mcHF, make sure the mini USB cable is connected to the PC
- Press and hold the BAND- button, then click the Power On button
- Install the driver if needed and start the mcHF Manager

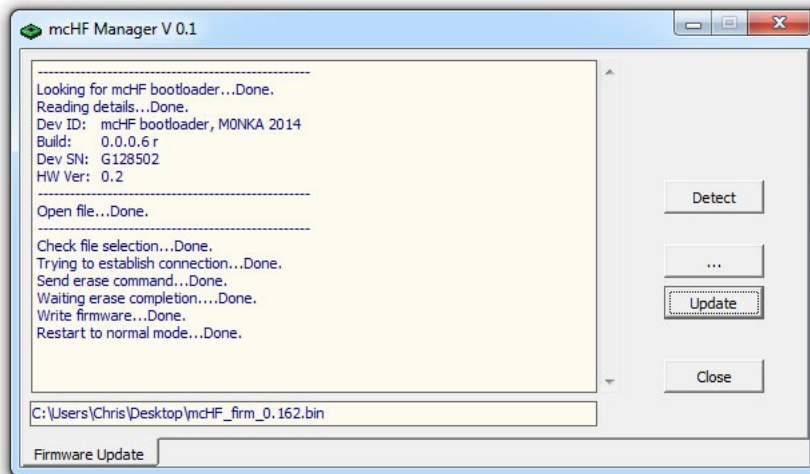
Successful enter of bootloader mode is indicated by LCD backlight off (black screen) and Red and Green LEDs lit the same time. Clicking on the Detect button should bring the bootloader details:



Select the latest firmware file(.bin) using the ‘...’ button.



You are ready for upgrade. Click on the Update button



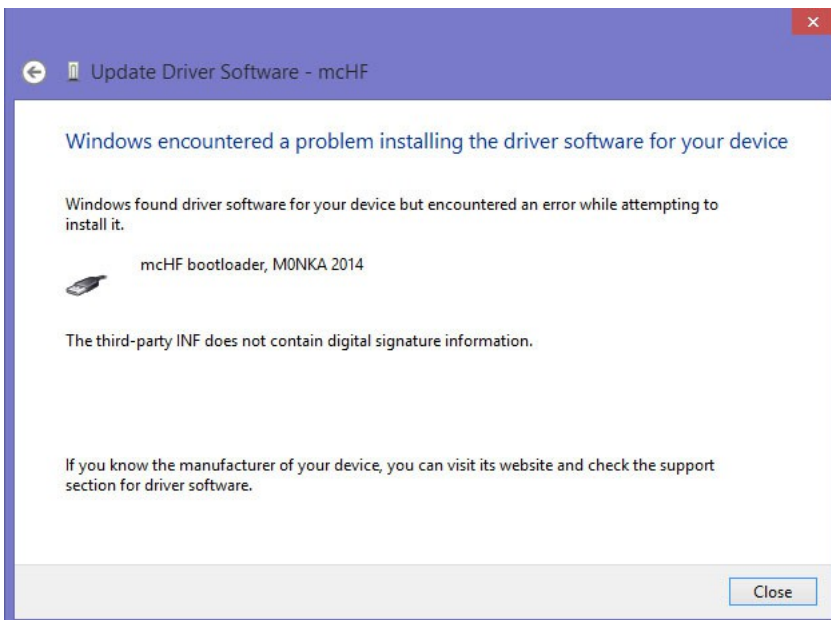
The device should restart and the firmware should be executed so your mcHF is ready for use. If you are running bootloader v 0.14 auto restart will not work.

Files

[mcHFManager](#) – Firmware upgrade utility, latest version 0.1

Troubleshooting

If you are running Windows 8 and get this error



please follow this [link](#) to fix the problem.