

SE-P1K



- Make/receive VoIP calls as easy as regular phone
- PC-to-PC, PC-to-Phone operation
- SKYPE ready, share your standard phone with Skype
- Start to saving your phone bill by using it

CONTENTS

CHAPTER 1 Welcome to SE-P1K

1.1 Summary	3
1.2 Features	3
1.3 System Requirements	3
1.4 Package Contents	3

CHAPTER 2 Use of SE-P1K

2.1 Run Skype	4
2.2 Connect SE-P1K to PC	5
2.3 Run SkypeMate	5
2.4 Call another Skype user (PC to PC)	5
2.5 Call to regular phone (PC to Phone)	6
2.6 Answer a call	6
2.7 Adjust options (Volume and Ringer)	6
2.8 Function keys	7
2.9 FAQ	7

The information in this document is subject to change without notice and does not represent a commitment on the part of the developer. This document contains materials protected by copyright. All rights are reserved. No part of this manual may be reproduced or transmitted in any form, by any means or for purpose without express written consent.

CHAPTER 1

Welcome to SE-P1K

1.1 Summary

SE-P1K is a most effective and easy mode of communication. User can enjoy an Internet phone just as regular phone. It embraces the great convenience and big savings.

1.2 Features

1. PC-to-PC and PC-to-phone operation
2. Caller ID function of VoIP calls
3. 199 incoming call and 199 dialed number
4. With LCD and LED show
5. Customized hand phone casing designs available
6. Key-in tone function
7. Driver built-in, plug and play
8. USB1.1 and 2.0 compatible, no need sound card
9. No external power required
10. Echo cancellation, noise reduction
11. Full duplex communication
12. Application support: Netmeeting /Messenger, Mediaring, Net2phone, Dialpad

1.3 System Requirements

1. Windows 2000 or XP
2. 400MHz processor or higher
3. 128MB RAM or higher
4. Free USB port

1.4 Package Contents

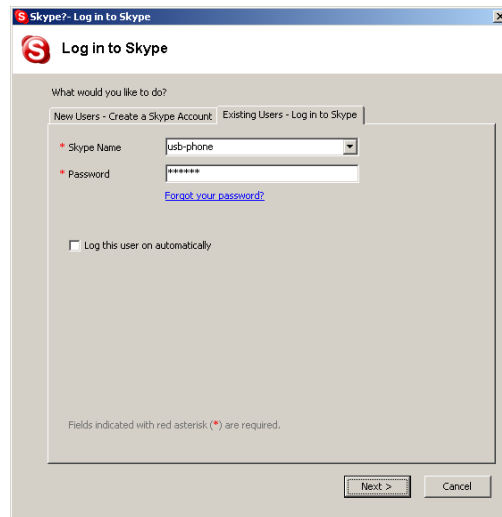
1. SE-P1K x1
2. User Manual x1
3. Installation CD x1

CHAPTER 2

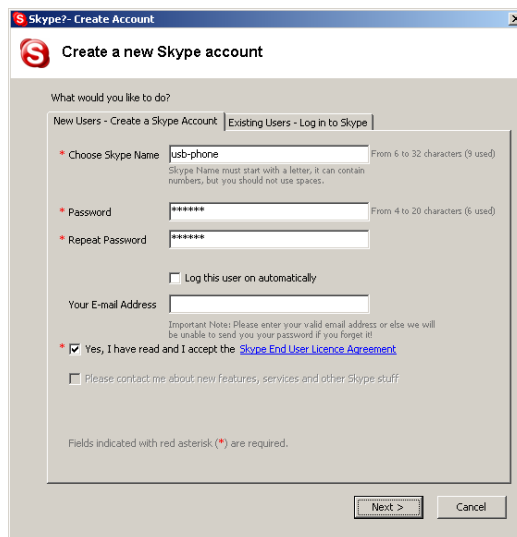
Use of SE-P1K

2.1 Run Skype

- ▣ Download Skype software and install it (www.skype.com), the version must be 1.0.0.106 or higher.
- ▣ Run Skype and log in with skype account.




You can create a Skype account as shown below:



After the software startup, the icon will appear to the system tray as shown below:




That indicates the Skype has successfully connected to Internet. If it hasn't connected to Internet, the icon will be shown as , now you have to check whether PC is connected to Internet successfully or not.

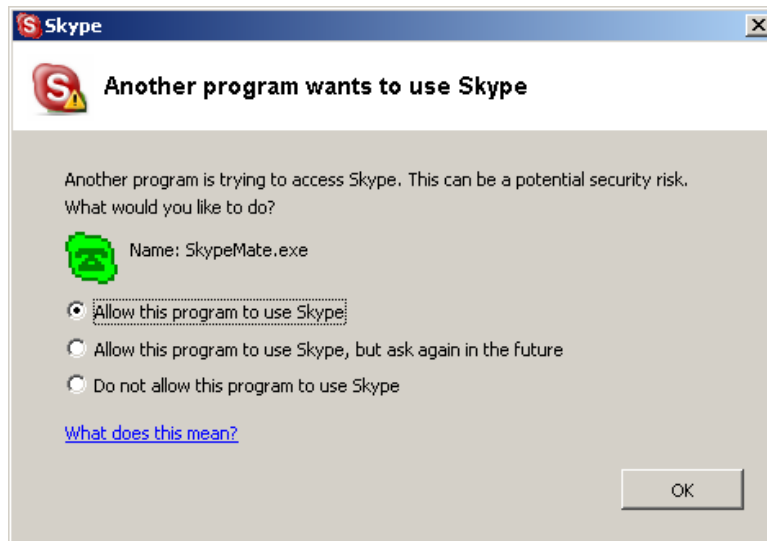
2.2 Connect SE-P1K to PC

- Connect SE-P1K to PC , the LCD shows "VOIP- Phone".

2.3 Run SkypeMate

- Insert SkypeMate Installation CD or download SkypeMate software, and install it (www.skype-phone.net).
- Run SkypeMate

Double-click the icon  on the desktop, the Skype program will pop up the window as shown below:



Select the first option "Allow this program to use Skype", click "OK" button.

Note: If you selected the wrong option, you can make another selection.


Please see **2.9. FAQ /problem3** for detail.

After running SkypeMate, the icon will appear to the system tray as shown below:



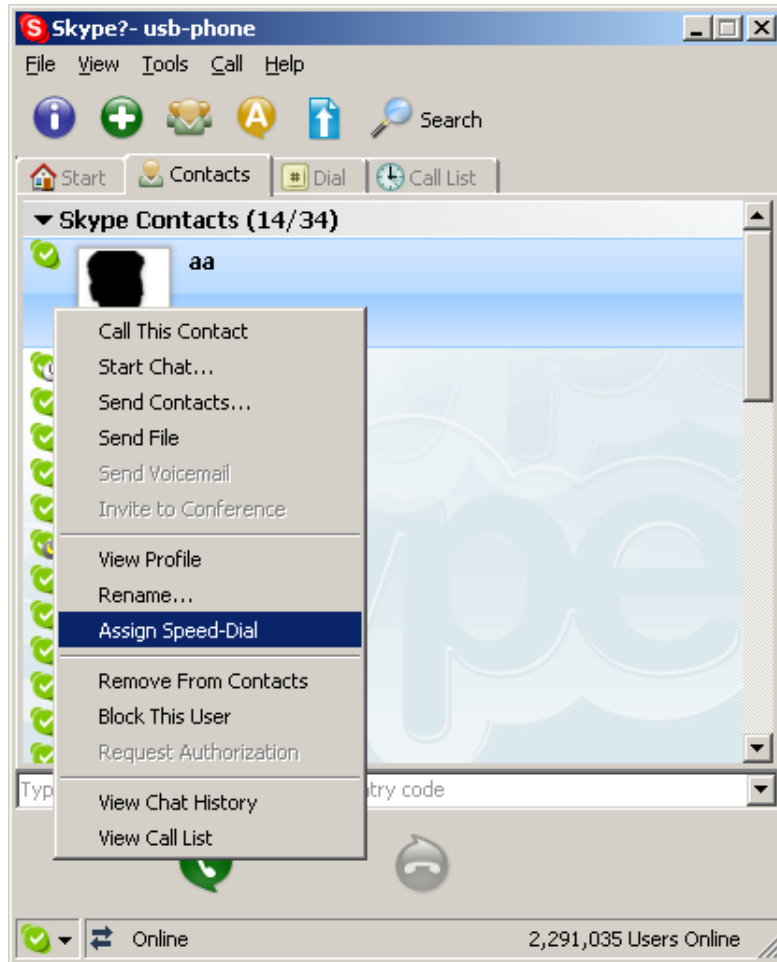
That indicates the device and Skype are connected successfully.


If the icon shown as , please run Skype first.

If the icon shown as , it means SE-P1K connected incorrectly, please reconnect SE-P1K to PC.


2.4 Call another Skype user (PC to PC)

- Add "aa" to Contacts
- Assign Speed-Dial for it, example "11"



- Input number and call out:
Press digital "11" on SE-P1K, this number will be shown on Skype window, then press SEND key  on SE-P1K to call out.


2.5 Call to regular phone (PC to Phone)

- Press "00"+"country number"+"phone number", then press .
- Example: call to China, beijing, press 00861012345678, then press SEND key.

0086	10	12345678
-----	-----	-----
country code	city code	destination number


Note: If you want to use this function, you should buy SkypeOut Credit first.

2.6 Answer a call


When a call in, the SE-P1K is ringing, press  to answer the call, press

 to refuse the call.

2.7 Adjust options (Volume and Ringer)

Double-click the  on the taskbar, then you can adjust the volume and ringer.

2.8 Function keys

- ▣ IN: Caller number review, delete and redial
You can press "IN" button to review the caller numbers with the time and date. Press "IN" button repeatedly to review the caller numbers from the latest memory to the oldest memory round by round. While you are reviewing, you can double-click "C" button to delete this number or press SEND key  to call out.
- ▣ OUT: Out number review, delete and redial
The usage is similar to "IN" button.
- ▣ C: Delete phone number and input wrong number
 - (1) Double click to delete caller number or out number.
 - (2) Delete the input wrong number while you are dialing number.
- ▣ ▲: UP
Review caller number or out number from oldest to latest.
- ▣ ▼: DOWN
Review caller number or out number from latest to oldest.

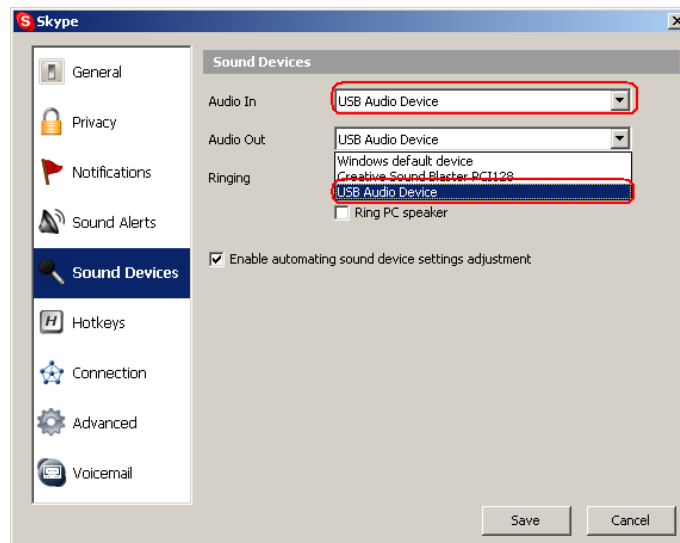
2.9 FAQ

Problem 1

The voice is played from the PC's sound card instead of the SE-P1K when I make/answer a call?

Resolution

Execute "Tools->Options->Sound Devices" to open the window as below:



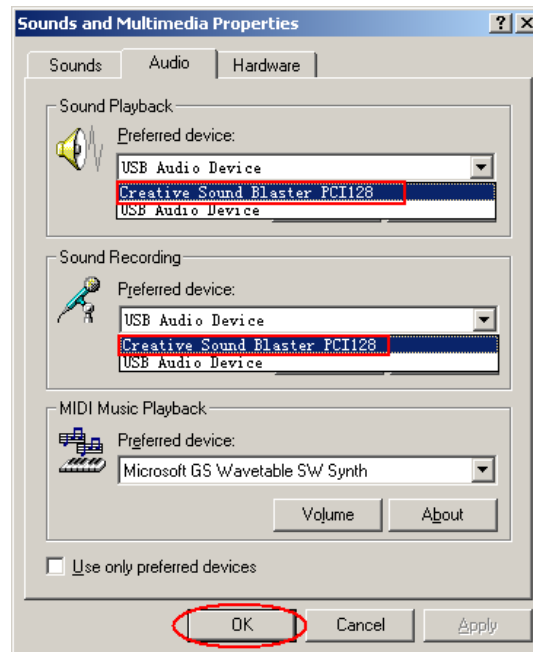
Set "Audio In" and "Audio Out" to "USB Audio Device".

Problem 2

There is no voice comes out when play music?

Resolution

Please execute the "Control Panel->Sound and Video (🔊)->Audio", set **Sound Playback** and **Sound Recording**'s Preferred device to your sound card, it shown as below:



Problem 3

Skype has been startup, but the icon of SkypeMate still shown as 🤖?

Resolution

Maybe you have selected the wrong option, you can execute "Tools->Options->Privacy->Manage other programs' access to Skype", then choose the needed option, click "Change" button to open the window as below, and make another selection.

