




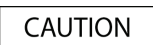


# **Moov M410/M610 Series**

## **Hardware User Manual**

# Important safety information

## PLEASE READ CAREFULLY BEFORE INSTALLING PRODUCT IN VEHICLE

	This is the safety alert symbol. It is used to alert you to potential personal injury hazards. Obey all safety messages that follow this symbol to avoid possible injury or death.
	WARNING indicates a potentially hazardous situation which, if not avoided, could result in death or serious injury.
	CAUTION indicates a potentially hazardous situation which, if not avoided, may result in minor or moderate injury.
	CAUTION used without the safety alert symbol indicates a potentially hazardous situation which, if not avoided, may result in property damage.



Removing original equipment, adding accessories or modifying your vehicle could affect the vehicle's safety or make it illegal to operate in some jurisdictions.

Follow all product instructions and all instructions in your vehicle owner's manual regarding accessories or modifications.

Consult your country's and/or state's laws regarding operation of a vehicle with any accessories or modifications.

It is your sole responsibility to place, secure and use your Mio in a manner that will not cause accidents, personal injury or property damage. Always observe safe driving practices.

Do not mount your Mio in a way that may interfere with the safe operation of the vehicle, the deployment of air bags or other safety equipment.

Do not operate your Mio while driving.

Before you use your Mio for the first time, familiarize yourself with your device and its operation.

On main roads, the distance to an exit calculated by your Mio may be further than the distance shown on road signs. Road signs show the distance to the start of an exit while your Mio shows the distance to the next intersection, i.e., the end of the exit ramp or road. To prepare to exit a road, always follow distance information on road signs.

The use of information regarding safety or speed camera locations may be subject to local laws in the country of use. You are responsible for checking that you can legally use the information in your country or in the country where the information will be used.



Do not handle your Mio while it is hot. Let the product cool, out of direct sunlight.

At full power, prolonged listening to your Mio via headphones or earphones can damage the ear of the user.



Do not expose your Mio to direct sunlight in an unattended vehicle for prolonged periods. Overheating may damage the unit.

**To discourage theft, do not leave your Mio, mounting bracket or any cables in plain view in an unattended vehicle.**

## Warning Notice to Drivers in the United States

State law may prohibit drivers in states such as Arizona, California and Minnesota from mounting objects on their windshields while driving. Please make sure you research and follow your most current State laws. An alternative mounting option may be provided in the box with your product; or see our website for additional mounting alternatives. Mio does not take any responsibility for any fines, penalties, or damages that may be incurred as a result of disregarding this notice.

# Home charger-specific safety information



To charge your Mio from the mains power, use the home charger (Model: MII050100; Input: 100-240V AC 50-60Hz; Output: 5V DC 1A Max) supplied by Mio as an accessory (may be sold separately). Using other home chargers with your Mio could result in serious injury or property damage.

Never use the charger if the plug or cord is damaged.

Do not expose the charger to moisture or water. Do not use the charger in a high moisture environment. Exposure to water may cause electrical sparks or fires.

Never touch the charger when your hands or feet are wet.

Allow adequate ventilation around the charger when using it to operate your Mio or charge the internal battery. Do not cover the charger with paper or other objects that will reduce ventilation. Do not use the charger while it is inside a carrying case or other container.

Ensure that the charger is connected to a power source with the correct fitting and voltage requirements. The voltage requirements can be found on the home charger casing and/or packaging.

Do not attempt to service the charger as this could result in personal injury. Replace the charger if it is damaged or exposed to excess moisture.

# Internal battery-specific safety information



Your Mio contains a non-replaceable internal lithium-ion battery. The battery may burst or explode if mishandled, releasing hazardous chemicals. To reduce the risk of fire or burns, do not disassemble, crush or puncture the battery.

Recycle or dispose of the battery safely and properly according to local laws and regulations. Do not dispose of the battery in fire or water.

## About the battery

- Use a specified battery in the equipment.
- **CAUTION:** The battery can burst or explode, releasing hazardous chemicals. To reduce the risk of fire or burns, do not disassemble, crush, puncture, or dispose of in fire or water.
- Important instructions (for service personnel only)
  - **Caution:** Risk of explosion if battery is replaced by an incorrect type. Dispose of used batteries according to the instructions.
  - Replace only with the same or equivalent type recommended by the manufacturer.
  - The battery must be recycled or disposed of properly.
  - Use the battery only in the specified equipment.



Only use the correct home charger (may be sold separately) or in-car charger supplied by Mio to charge your Mio internal battery.

Only use your Mio internal battery with your Mio unit.

The Mio battery will stop charging when the ambient temperature is less than 0°C (32°F) or more than 40°C (104°F).

**Failure to adhere to these warnings and cautions may lead to death, serious injury or property damage. Mio disclaims all liability for installation or use of your Mio that causes or contributes to death, injury or property damage or that violates any law.**

# Compliance



**WARNING** This product, its packaging and its components contain chemicals known to the State of California to cause cancer, birth defects or reproductive harm. This Notice is being provided in accordance with California's Proposition 65.



For regulatory identification purposes: Mio Moov M410 Series is assigned a model number of N393-4300.

For regulatory identification purposes: Mio Moov M610 Series is assigned a model number of N393-5000.

**Marking labels located on the exterior of your Mio indicate the regulations that your model complies with. Please check the marking labels on your Mio and refer to the corresponding statements in this chapter. Some notices apply to specific models only.**



Products with the CE marking comply with Radio & Telecommunication Terminal Equipment Directive (R&TTE) (1999/5/EC), the Electromagnetic Compatibility Directive (2004/108/EC) and the Low Voltage Directive (2006/95/EC) - issued by the Commission of the European Community. Compliance with these directives implies conformity to the following European Standards:

**EN 301 489-1:** Electronic compatibility and Radio spectrum Matters (ERM), Electromagnetic Compatibility (EMC) standard for radio equipment and services; Part 1: Common technical requirements.

**EN 55022:** Radio disturbance characteristics

**EN 55024:** Immunity characteristics

**EN 61000-3-2:** Limits for harmonic current emissions

**EN 61000-3-3:** Limitation of voltage fluctuation and flicker in low-voltage supply system

**IEC 60950-1:2005:** Product Safety

The manufacturer cannot be held responsible for modifications made by the User and the consequences thereof, which may alter the conformity of the product with the CE Marking.

## Declaration of conformity

Hereby, Mio Technology declares that this N393-4300/N393-5000 is in compliance with the essential requirements and other relevant provisions of Directive 1999/5/EC.

## WEEE



This product must not be disposed of as normal household waste, in accordance with the EU directive for waste electrical and electronic equipment (WEEE - 2002/96/EC). Instead, it should be disposed of by returning it to the point of sale, or to a municipal recycling collection point.

# Contents

---

Important safety information .....	2
Home charger-specific safety information.....	3
Internal battery-specific safety information.....	3
Compliance .....	4
WEEE.....	4
Welcome.....	6
Important information for using the manual.....	6
Disclaimer.....	6
Mounting your Mio in a vehicle.....	7
Enabling Traffic (TMC) Reception.....	8
Getting to know your Mio.....	9
How do I turn on my Mio? .....	10
Using the power button.....	10
Resetting the device.....	10
How do I charge the battery?.....	11
How do I charge the battery in a vehicle?.....	11
How do I charge the battery via my computer? .....	11
How do I charge the battery at home or work? .....	12
Reference .....	13
What is GPS? .....	13
How does my Mio receive GPS signals?.....	13
Caring for your Mio.....	13
Troubleshooting.....	14

# Welcome

---

Thank you for purchasing this Mio. Please read this manual carefully before using your Mio for the first time. Keep this manual in a safe place and use as your first point of reference.

## Important information for using the manual

It is important to understand the terms and typographical conventions used in this manual.




### Formatting

The following formatting in the text identifies special information:

Convention	Type of Information
<b>Bold</b>	Components or items displayed on screen, including buttons, headings, field names and options.
<i>Italics</i>	Indicates the name of a screen.

### Icons

The following icons are used throughout this manual:

Icon	Description
	Note
	Tip
	Warning

### Terms

The following terms are used throughout this manual to describe user actions.

Term	Description
Press	Press and release a button quickly.
Tap	Press and release an item displayed on the touch screen.
Select	Tap an item in a list or tap a command from a menu.

## Disclaimer

Not all models are available in all regions.

Depending on the specific model purchased, the colour and look of your device and accessories may not exactly match the graphics shown in this document.

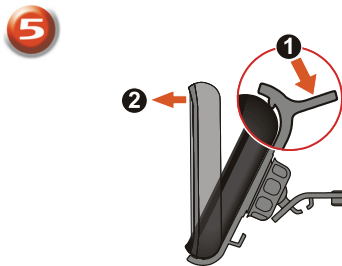
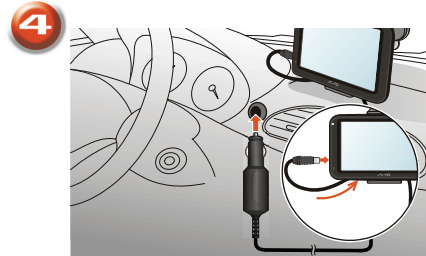
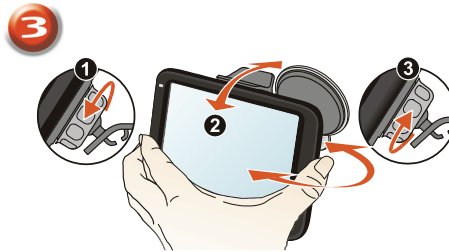
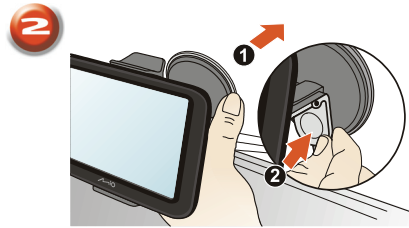
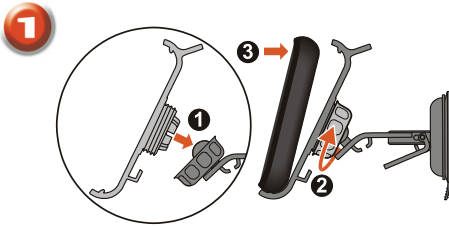
Mio operates a policy of ongoing development. Mio reserves the right to make changes and improvements to any of the products described in this document without prior notice. Mio does not warrant that this document is error-free. The screenshots and other presentations shown in this manual may differ from the actual screens and presentations generated by the actual product. All such differences are minor and the actual product will deliver the described functionality as presented in this User Manual in all material respects.

Revision: R00  
(3/2012)

# Mounting your Mio in a vehicle

## CAUTION:

- Never mount your Mio where the driver's field of vision is blocked.
- If the windscreen is tinted with a reflective coating, it may be athermic and impact the GPS reception. In this instance, please mount your Mio where there is a "clear area" - usually just beneath the rear-view mirror.
- To protect your Mio against sudden surges in current, connect the in-car charger only after the car engine has been started.



# Enabling Traffic (TMC) Reception

**Traffic information is available in selected models and countries only.**

Depending on the model of your Mio you can receive live traffic information in one of two ways:

- If your Mio has a built-in TMC receiver, you can receive live traffic information\* via the in-car charger which is used as an antenna.
- If your Mio does not have a built-in TMC receiver, you will need to install the TMC accessory kit (may be sold separately - see [www.mio.com](http://www.mio.com) for details).

For information on using traffic information on your Mio, see the *Software User Manual*.

\* Subscription may be required. See [www.mio.com](http://www.mio.com) for more details.



# Getting to know your Mio

---



**1** Power button

**2** Reset button

**3** Speaker

**4** Battery indicator

**5** Touch screen

**6** Connector for in-car charger, USB cable\*, home charger\* and TMC accessory kit\*

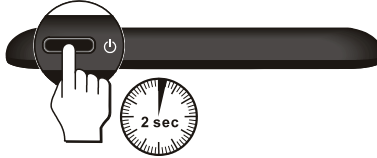
\*may be sold separately

# How do I turn on my Mio?

---

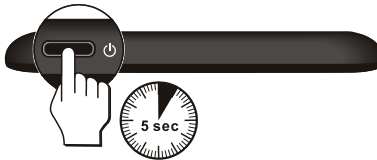
## Using the power button

For the initial start-up, press and hold the power button for 2 seconds to turn on your device.



For normal operation, turn off the device by briefly pressing the power button. Your Mio will enter a suspended state. When you next briefly press the power button, your Mio will return to the Main Menu.

To turn off your Mio, press and hold the power button for 5 seconds.



## Resetting the device

Occasionally, you may need to perform a hardware reset when your Mio stops responding; or appears to be “frozen” or “locked-up.” Insert a small rod, such as a straightened paperclip, into the reset button of your device.



# How do I charge the battery?

 The battery may not be fully charged when you use your Mio for the first time.


**CAUTION:** For optimal performance of the battery, note the following:

- Do not charge the battery when the temperature is high (e.g. in direct sunlight).
- There is no need to fully discharge the battery before charging.
- When leaving your Mio for long periods, turn off your Mio to save battery power.

The battery indicator light on your Mio indicates the level of internal battery charge:

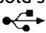
- **Green** - battery full
- **Orange** - battery charging

## How do I charge the battery in a vehicle?

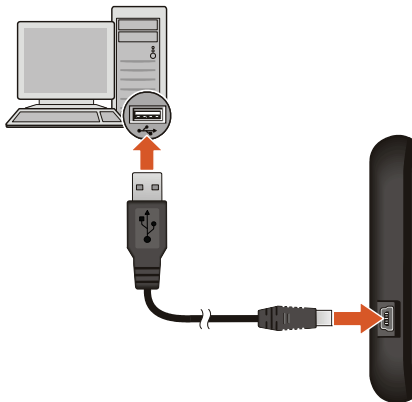
To charge your Mio in a vehicle, plug the in-car charger into  on the left side of your Mio and the other end into the vehicle power socket.

## How do I charge the battery via my computer?

 For optimal charging results, ensure that your Mio is turned off while connected to your computer.


1. Turn on your computer.
2. Plug the large end of the USB cable (may be sold separately) directly into a USB port on your computer (not a USB hub) and plug the small end into  on the left side of your Mio.


**CAUTION:** When your Mio is turned on and connected to a computer, it is recognized as an external mass-storage device. Do NOT delete any files that are pre-installed on your Mio. Deleting the files can cause your Mio to crash

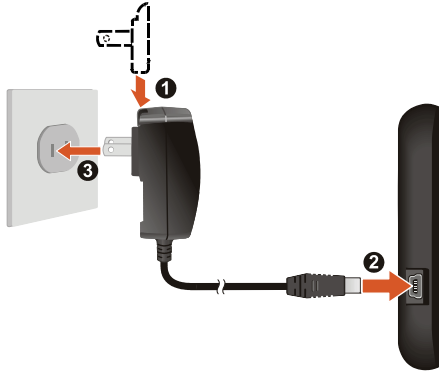


# How do I charge the battery at home or work?

You can use an optional home charger to charge the battery.

To charge your Mio using a mains power socket, plug the home charger cable into  on the left side of your Mio and the mains power charger into the power socket.

 The home charger is not included with all models and may be purchased separately (see [www.mio.com](http://www.mio.com) for details).



# Reference

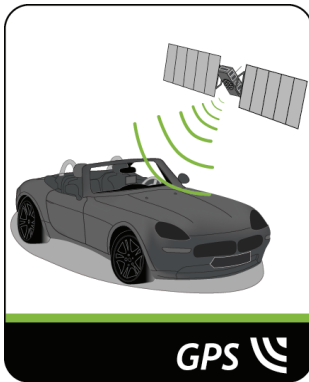
---

## What is GPS?

The Global Positioning System (GPS) is available at any time, free of charge, and is accurate to within 5m (15ft). GPS navigation is made possible by a network of satellites that orbit the Earth at around 20,200km (12,552mi). Each satellite transmits a range of signals which are utilized by GPS receivers, such as your Mio, to determine an exact location. Although a GPS receiver can detect signals from up to 12 satellites at any time, only four signals are required to provide a position or "GPS fix" (latitude and longitude), for vehicle navigation systems.

## How does my Mio receive GPS signals?

Your Mio receives GPS signals via the internal GPS antenna. To guarantee the optimum GPS signal strength, ensure your Mio is outdoors, or in a vehicle outdoors, and has an unobstructed view of the sky. GPS reception is not usually affected by weather, however, very heavy rain or snow may have a negative effect on your reception.



## Caring for your Mio

Taking good care of your Mio will ensure trouble-free operation and reduce the risk of damage to your Mio:

- Keep your Mio away from excessive moisture and extreme temperatures.
- Avoid exposing your Mio to direct sunlight or strong ultraviolet light for extended periods of time.
- Do not place anything on top of your Mio or drop objects on your Mio.
- Do not drop your Mio or subject it to severe shock.
- Do not subject your Mio to sudden and severe temperature changes. This could cause moisture condensation inside the unit, which could damage your Mio. In the event of moisture condensation, allow your Mio to dry out completely before use.
- The screen surface can easily be scratched. Avoid touching it with sharp objects. Non-adhesive generic screen protectors designed specifically for use on portable devices with LCD panels may be used to help protect the screen from minor scratches.
- Never clean your Mio when it is turned on. Use a soft, lint-free cloth to wipe the screen and the exterior of your Mio.
- Do not use paper towels to clean the screen.

- Never attempt to disassemble, repair or make any modifications to your Mio. Disassembly, modification or any attempt at repair could cause damage to your Mio and even bodily injury or property damage and will void any warranty.
- Do not store or carry flammable liquids, gases or explosive materials in the same compartment as your Mio, its parts or accessories.

## Troubleshooting

If you encounter a problem you cannot solve, contact an authorized service centre for assistance.

Problems	Solutions
Your Mio does not turn on when using battery power.	The remaining battery power may be too low to operate your Mio. Charge the battery using the in-car charger, home charger (may be sold separately) or USB cable (may be sold separately), then try again.
Screen responds slowly.	The remaining battery power may be too low to operate your Mio. If the problem still persists, reset your Mio.
Screen freezes.	Reset your Mio.
Screen is hard to read.	Increase the screen brightness.
Cannot establish a connection with a computer.	<p>Ensure that your Mio and your computer are both turned on before trying to establish a connection.</p> <p>Make sure that the cable is securely plugged into the USB port on your computer and on your Mio. Connect the USB cable (may be sold separately) directly to your computer, not a USB hub.</p> <p>Reset your Mio before connecting the USB cable (may be sold separately). Always disconnect your Mio before you restart your computer.</p>



# **Moov M410 / M610 Series**

## **Software User Manual**

# Contents

---

- Welcome..... 4
- How do I use the touch screen?..... 5
  - Navigating on the screen ..... 5
- How do I get started? ..... 6
- Main Menu..... 7
  - How do I navigate through the menu screens?..... 7
- How do I go from A-B? ..... 9
  - How do I plan my first trip?..... 9
  - How do I preview the destination on map? ..... 10
- How do I view my route? ..... 11
  - The driving map..... 11
  - How do I view my route statistics?..... 12
  - How do I adjust the volume? ..... 12
  - How do I zoom in/out the map?..... 13
  - What if I miss a turn? ..... 13
  - IQ Routes™ and LearnMe™..... 14
- How do I search for a POI by type? ..... 15
- How do I search for a POI by keyword?..... 17
- How do I receive current traffic information via TMC? ..... 18
  - How will I know when a Traffic Event occurs? ..... 18
  - Traffic Overview screen ..... 18
  - Traffic messages ..... 21
- My Places ..... 22
  - How do I save a location as My Place or Home? ..... 22
  - How do I navigate to a location I have saved? ..... 22
  - How do I navigate to Home? ..... 23
  - How do I navigate to a recent place? ..... 23
  - How do I edit the name of a location in My Places? ..... 24
  - How do I delete a saved location? ..... 24
  - How do I import a location to My Places from Google Maps? ..... 25
- What is NEAR ME?..... 26
  - How do I search for a POI using NEAR ME? ..... 26
- What can I customise?..... 28
  - Audio..... 28
  - Screen ..... 29
  - Safety..... 29
  - Maps..... 30
  - Route options ..... 31
  - Language..... 31



Units.....	32
Device.....	32
Demo.....	33
Help.....	34
What is MioMore Desktop?.....	35
How do I install MioMore Desktop onto my computer?.....	35
MioMore Desktop Menu.....	37
My Subscriptions.....	38
My Maps.....	40
Custom POIs.....	43
Unlock Features.....	45
Redeem.....	46
MY MIO.....	47
For more information.....	50
Point of Interest categories.....	50
Traffic and other TMC Events.....	52
Online support.....	53
Mio Advantage.....	53
Speed Limit.....	53
Safety Camera POIs.....	53
Disclaimer.....	54
Copyright.....	54

# Welcome

---

Thank you for purchasing this Mio. This manual has been prepared to guide you through the operation of your Mio from first set-up through to continuous use. Please read this manual carefully before using your Mio for the first time. Keep this manual in a safe place and use as your first point of reference.

## Important information for using the manual

It is important to understand the terms and typographical conventions used in this manual.




### Formatting

The following kinds of formatting in the text identify special information:

Convention	Type of Information
<b>Bold</b>	Mio components or items displayed on screen, including buttons, headings, field names and options.
<i>Italics</i>	Indicates the name of a screen.

### Icons

The following icons are used throughout this manual:

Icon	Description
	Note
	Tip
	Warning

# How do I use the touch screen?

---

## Navigating on the screen


To operate your Mio, touch the screen with your fingertip. You can perform the following actions:

- **Tap**  
Press and release an item displayed on the touch screen.
- **Select**  
Tap an item in a list or tap a command from a menu.



# How do I get started?

---

 The first time you use your Mio it may take several minutes to establish a GPS connection.

## How do I turn my Mio on for the first time?

To get started for the first time, complete the following steps:

1. **Read the Important Safety Information**

2. **Position your Mio in your vehicle**

Follow the instructions in the *Quick Start Guide*.

**CAUTION** Ensure that your Mio does not obstruct the driver's view, or interfere with the operation of the vehicle airbags and safety devices.

3. **Turn your Mio on**

Your Mio will turn on and display the *Language* screen.

4. **Select your preferred language**


From the *Select Language* screen, tap your preferred language.

- You can change your preferred language while using your Mio.


5. **Read the warning message**

The *Safety Agreement* screen will display after you have selected your preferred language. Read the Safety Agreement message. To confirm that you have read and understood the message, tap **Accept**.

6. **View the Tutorial**

- To move forward through the *Tutorial* screen, tap **Next**. To view the previous screen, tap .
- To skip the *Tutorial* screen, tap **Skip**.



To prevent the Tutorial from displaying on each start-up, tap the **Show tutorial on start-up** option to deselect it. To enable the tutorial again, select the option from **Main Menu** →  → **Help** → **View Tutorial**.

7. **Customise the device**

Follow the onscreen instructions to select your preferred distance unit, date format, and time format.

8. **Unlock your Mio**

Depending on your model, you may need to enter a Startup Key (which is printed on the side of the box) and then tap **OK** to unlock the device. You will only have to do this the first time you use your Mio.



It is recommended that you keep a copy of the Startup Key in a safe place.

9. **Set up Home**

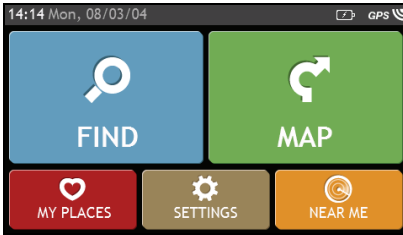
The Home setup wizard only appears on the first time you start your Mio.

- Tap **OK** to set up your home immediately using the address-entry wizard.
- You can tap **Cancel** to skip the wizard, and then select you home later in MY PLACES.

When you have finished the steps above, the *Main Menu* screen will display. If you have a GPS fix, you can start to use Mio to plan your trip.

# Main Menu

The Main Menu is your starting point for searching for a destination. The Main Menu also allows you to customise your Mio, view saved locations as My Place/Home, and search for POIs nearby.



Search for places, areas and streets to help plan your route.



Display the *Map* screen.



Access your saved locations.



Configure your Mio to enhance your navigation experience.




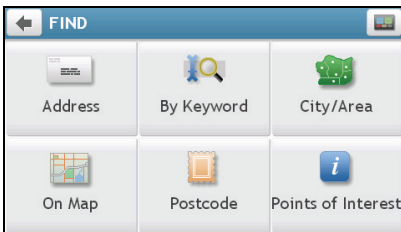
Search for Points of Interest nearby.



## How do I navigate through the menu screens?


How do I use the **BACK** button and **MAIN MENU** button in the title bar?

1. On the *Main Menu* screen, tap the desired menu button to enter the menu screen.

For example, tapping  will lead you to the *FIND* main screen.

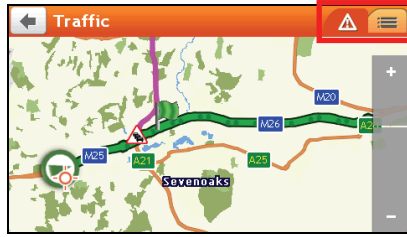
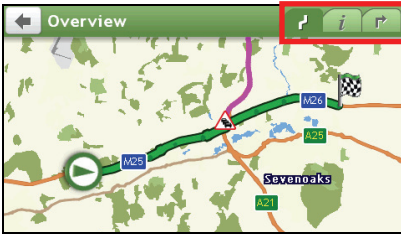


2. The system provides the **BACK** button (  ) and **MAIN MENU** button (  ) in the title bar of the menu screen, which allow you to navigate through the menu screens easily. You can:
  - Return to the previous screen by tapping the **BACK** button.
  - Return to the Main Menu by tapping the **MAIN MENU** button.

 In some menu screens, such as the Keyboard screen, the **MAIN MENU** button will not appear in the title bar. In this instance, you may have to tap the **BACK** button twice.

## How do I use the tabs in the title bar?






In some menu screens, such as the map *Overview* screen, the system provides the tab buttons that allow you to enter the additional page in the menu screen. Simply tap the desired tab to change the view.



 The selected tab will be highlighted as a darker-colour tab.

# How do I go from A-B?

Your Mio is equipped with maps that provide street-level detail for door-to-door navigation, including Points of Interest such as accommodation, parking areas, petrol stations, railway stations and airports.

When you ...	Then ...
need to search for an address	tap  then select <b>Address</b> to search for the address.
want to search all information on the device - city, streets, named sites, features, landmarks or venues	tap  then select <b>By Keyword</b> .
search for a Point of Interest	tap  then select <b>Points of Interest</b> to search for a POI.
want to navigate to a recently visited location	tap  then select the <b>Recent Locations</b> tab (  ).




**WARNING** For your safety, enter destination information before you start a journey. Do not enter a destination while driving.



## How do I plan my first trip?

Using your Mio to plan your first trip is easy. There are several ways to select your destination. Complete the following to navigate to a street address that you know using the FIND address wizard.



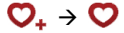
The process involves the following steps:

- Tap the **FIND** button on the home screen.
- Select the **Address** option in the FIND menu.
- Enter the location name: **Poynings, East Sussex/West Sussex**. Tap **OK**.
- Enter the street name: **Fabians Way**. Tap **OK**.
- Enter the house number: **25**. Tap **OK**.
- The final destination is displayed: **25 Fabians Way, Henfield, West Sussex, BN5 9PT, United Kingdom**. Tap **GO** to start navigation.

 When it is the first time you use FIND wizard, the Select Country screen will appear before the FIND main screen. Select your country and then you can start searching location.

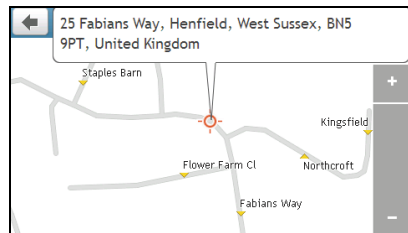
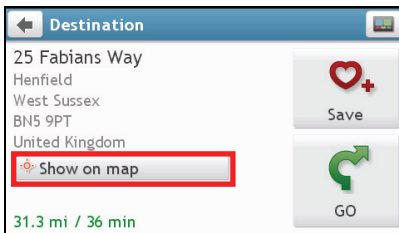
 If needed, you can change the country to search location. To select the other country, tap the National Flag button (e.g.  ) in the title bar of the Keyboard screen before you search the city.

Complete the following:

If you want to ...	Then ...
calculate the route and start navigating	<ul style="list-style-type: none"> <li>tap . The <i>Map</i> screen will display.</li> </ul>
save the location as a favourite	<ul style="list-style-type: none"> <li>tap . The location will be saved in My Places immediately.</li> </ul>
save the location as Home	<ul style="list-style-type: none"> <li>tap . The <i>Edit</i> screen will display.</li> <li>tap <b>Save as Home</b>.</li> </ul>
explore the map	<ul style="list-style-type: none"> <li>tap <b>Show on map</b>.</li> </ul>


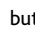
## How do I preview the destination on map?

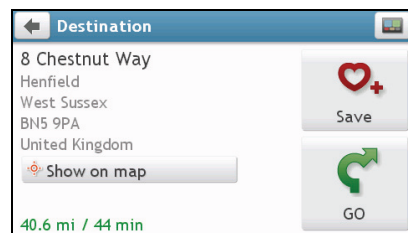
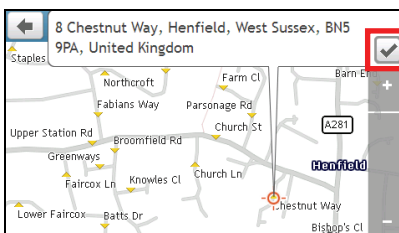
After searching an address (or a POI), you can preview the destination on map to explore the area near the location. On the *Destination* screen, tap the **Show on map** button to display the destination preview map as below.



## How do I explore the map?

On the destination preview map, you can:

- Tap the  /  button to zoom in/out the map.
- View the information of your destination that is shown at the top of the map screen.
- Tap on a street/area/POI to display the related information of the location near your destination.
- The information of the selected street/area/POI near your destination will be displayed with a check mark. Tapping the check mark will bring up the *Destination* screen of the selected location.






# How do I view my route?

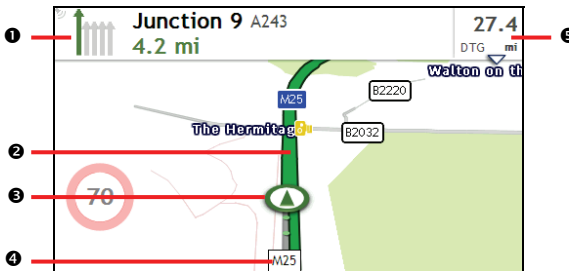
## The driving map



When a route has been calculated, the *Map* screen will display. You will be directed to your destination by spoken and visual instructions.


 The driving map will be displayed automatically when:


- a route is calculated.
- the device is reset and the user is on a route.

Or alternatively, you can access the map screen manually by tapping the MAP button on the Main Menu.



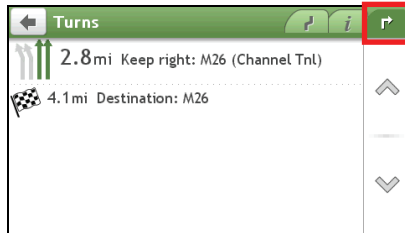
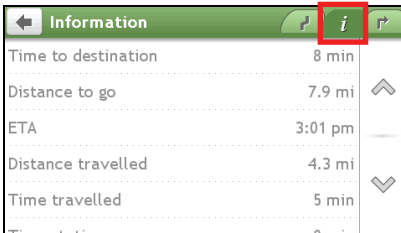
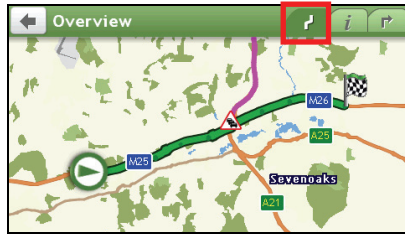
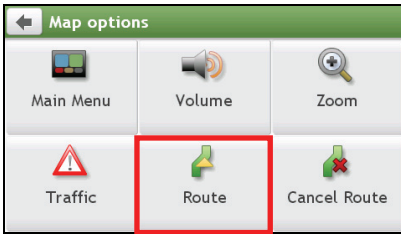
	Item	Description
1	<b>Direction and distance of next turn</b>	The direction and distance to your next turn. <ul style="list-style-type: none"><li>▪ Tap  to repeat the vocal instruction.</li></ul>
2	<b>Current route</b>	Your current route is highlighted.
3	<b>Current position</b>	Your current position is marked with  .
4	<b>Address bar</b>	The current address will be displayed in the text box at the bottom of the map screen.
5	<b>Distance and time information</b>	Tap to expand and select the following options: <ul style="list-style-type: none"><li>▪ DTG (Distance to Go)</li><li>▪ TTG (Time to Go)</li><li>▪ km/h or mph (speed) and compass heading</li><li>▪ ETA (Estimated Time of Arrival)</li><li>▪ Time</li></ul>

 Depending on your driving route, you may see some icons that provide different information on your *Map* screen. Please note that these icons will not be always displayed during your journeys.

For example: the Speed Limit icon (  ) on the *Map* screen. The Speed Limit icon shows the speed limit of the current road. If greyed out, you are below this speed limit. When over set limit, you will be warned with an audible and visual warning.


# How do I view my route statistics?

Tap anywhere on the *Map* screen to bring up the *Map options* screen. Tap the Route button to view the route statistics.




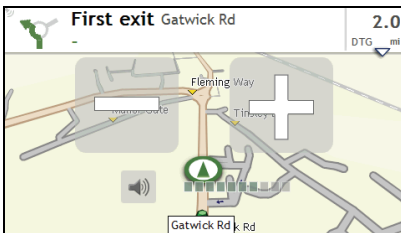
Your Mio provides information on your:

- time to destination
- distance to go
- estimated time of arrival
- distance travelled
- time taken for trip
- stationary time






 Tap the tabs in the title bar to view the additional information in the different screens.


# How do I adjust the volume?

From the *Map options* screen, tap . The volume buttons will be displayed on the map screen in translucent mode.




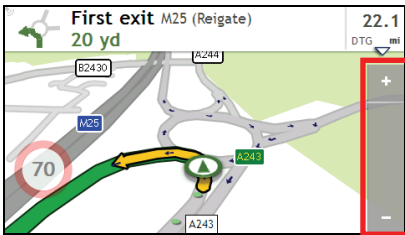
Complete the following:

If you want to ...	Then ...
increase the volume	tap  <ul style="list-style-type: none"> <li>The volume bar indicates the current volume level.</li> </ul>
decrease the volume	tap  <ul style="list-style-type: none"> <li>The volume bar indicates the current volume level.</li> </ul>
mute or unmute	tap  <ul style="list-style-type: none"> <li>The speaker icon indicates the status:           <ul style="list-style-type: none"> <li> : muted</li> <li> : unmuted</li> </ul> </li> </ul>



 The volume buttons will automatically disappear after the map is idle for 5 seconds.


## How do I zoom in/out the map?

From the *Map options* screen, tap . The zoom buttons will be displayed on the map screen in translucent mode.



Complete the following:


If you want to ...	Then ...
zoom in the map	tap and hold  .
zoom out the map	tap and hold  .

 The zoom buttons will automatically disappear after the map is idle for 5 seconds.

## What if I miss a turn?

### Back-On-Track™ Automatic Rerouting

You will be redirected if you make a wrong turn. A message informing you that your route is being re-calculated will display at the top of the screen.

To cancel a route re-calculation, tap  on the *Map options* screen. A warning will display asking you to confirm the cancellation. If confirmed, both the re-calculation and your current route will be cancelled.

# IQ Routes™ and LearnMe™

IQ Routes™ is available in selected models and countries only.

Your Mio features IQ Routes, which intelligently anticipates congested roads at peak times so that they can be avoided. Your Mio does this by using historical, anonymised data from millions of fellow drivers. Since IQ Routes helps you automatically avoid predicted heavy congestion, you will be able to save time and money during your journeys.

With LearnMe technology, your Mio includes an intelligent capability that learns and adapts to your personal driving style. Over time, your Mio learns your preference for road types and driving speeds, turns and more. Your Mio will save the information and provide a more personalised route and accurate time of arrival the next time you plan a trip.




When you restore factory defaults, your LearnMe profile will be cleared from the device.

# How do I search for a POI by type?

A POI (Point of Interest) is a named site, feature, landmark or public venue which can be displayed as an icon on the map. POIs are grouped by category, such as petrol stations, parks, beaches and museums.

1. Tap .

2. Tap .




The *POI Menu* screen will display.




3. Complete the following:

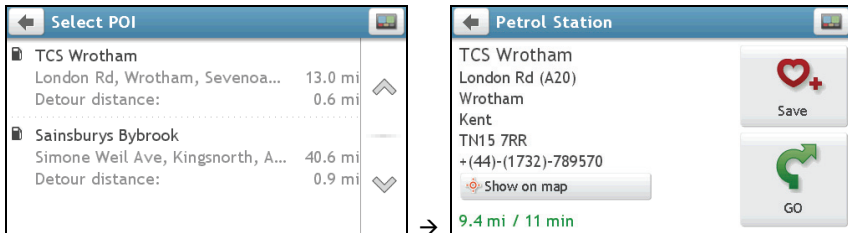
If you want to ...	Then ...
search for the POIs near your current location	tap <b>Nearby</b> . The <i>POI Type Selection</i> screen will display.
search for the POIs in a specified city or area	<ul style="list-style-type: none"> <li>▪ tap <b>In City/Area</b>. The <i>Keyboard</i> screen will display.</li> <li>▪ after you have entered a name of a city/area, tap <b>OK</b>. The <i>POI Type Selection</i> screen will display.</li> </ul>
search for the POIs on your route	tap <b>Along Route</b> . The <i>POI Type Selection</i> screen will display.
search for the POIs near your destination	tap <b>Near Destination</b> . The <i>POI Type Selection</i> screen will display.

4. Complete the following:



If you want to ...	Then ...
search for POIs by keyword	<ul style="list-style-type: none"> <li>▪ tap <b>By Name</b>. The <i>Keyboard</i> screen will display.</li> <li>▪ after you have entered a keyword, tap <b>OK</b>. The <i>POI List</i> screen will display.</li> </ul>
search for petrol stations	tap  The <i>POI List</i> screen will display.
search for parking places	tap  The <i>POI List</i> screen will display.
search for banks and ATMs	tap  The <i>POI List</i> screen will display.

If you want to ...	Then ...
search for emergency services	tap  . The <i>POI List</i> screen will display.
view more POI types	<ul style="list-style-type: none"> <li>▪ tap <b>By Type</b>. The <i>POI Type List</i> screen will display.</li> <li>▪ select a POI type. The <i>POI List</i> screen will display.</li> </ul>

5. Tap the desired item from the list.



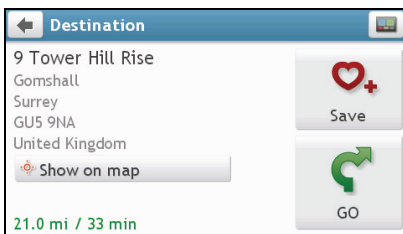
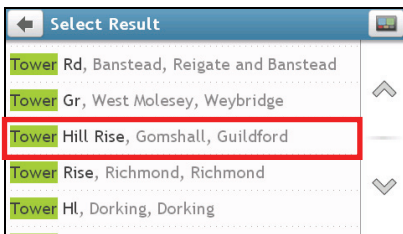
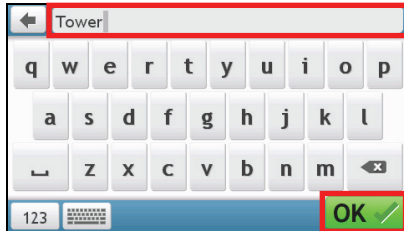
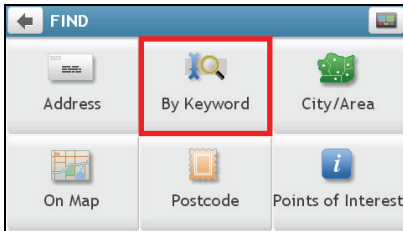
6. Complete the following:

If you want to ...	Then ...
calculate the route and start navigating	tap  . The <i>Map</i> screen will display.
save the location as a favourite	tap  . The location will be saved in My Places immediately.
view the POI location on the map	tap <b>Show on map</b> . The <i>Preview</i> screen will display.



# How do I search for a POI by keyword?

Complete the following to navigate to a POI that you find by keyword.

Tap 



Complete the following:

If you want to ...	Then ...
calculate the route and start navigating	tap  . The <i>Map</i> screen will display.
save the location as a favourite	tap  . The location will be saved in My Places immediately.
view the location on the map	tap <b>Show on map</b> . The <i>Preview</i> screen will display.

# How do I receive current traffic information via TMC?

Traffic information is available in selected models and countries only.

Your Mio can receive current traffic information for all main roads and motorways, enabling you to avoid potential delays on your route. Event messages and traffic icons will display as they occur. If an event message obscures your current location, the map will adjust to display both the message and your location.

## How does my Mio receive traffic information?

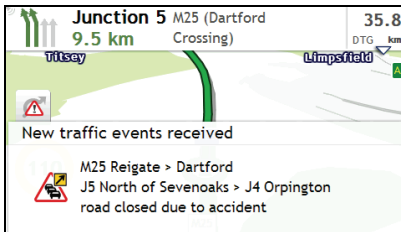
Depending on your model, you may receive current traffic information on your Mio using the built-in TMC receiver or via the Mio traffic accessory kit. The traffic accessory kit may be sold separately.

The Traffic Message Channel (TMC) broadcasts real-time traffic information via the FM Radio Data System (RDS). FM radio stations transmit TMC data on a cycle of several minutes, with hundreds of events able to be broadcast to TMC receivers.

You have to pay for TMC service in some models and in some countries.


## How will I know when a Traffic Event occurs?

When travelling through an area in which you can receive traffic updates, your Mio will decode these events and display them on-screen. An icon will display at the event location on the map screens, and an audible warning is given if an event is on your route. Where an event spans a specific distance, the road will be highlighted and arrows will indicate the direction affected.




A message will display at the bottom of the screen with the road name, the section of road affected and the type of event that has occurred. The message remains on screen for 8 seconds and is added to the *Event list*.

## Traffic Overview screen





 Depending on your Mio model, traffic information may not be available, may require a subscription, or may require the Traffic Accessory Kit (may be sold separately).

When you see the traffic event message on your driving map screen, you can open the *Traffic Overview* screen to display a general overview of the traffic situation on your route, including all events in the immediate vicinity.



Tap on the driving map to bring up the *Map options* screen, and then tap .

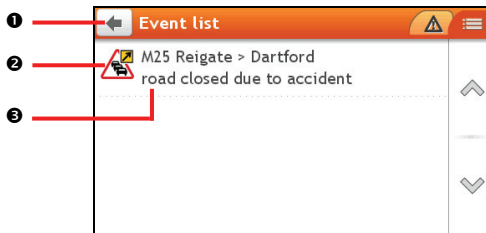



	Item	Description
1	Event icon	Displays icon to indicate type of event.
2	Current position	Your current position is marked with  .
3		To zoom in or out, tap and hold  or  .

### How do I view a list of all events on my route?

Your Mio creates a list of events as they are received, which is displayed on the *Event list* screen.

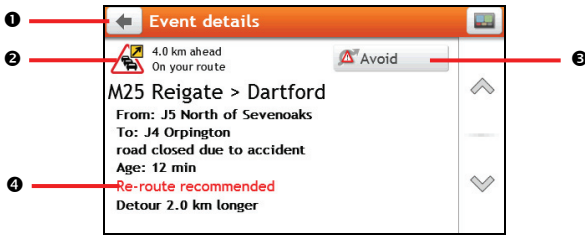
From the *Traffic Overview* screen, tap .



	Item	Description
1		Tap to return to the previous screen.
2	Event icon	Displays an icon to indicate type of event.
3	Event description	Displays details of the Event, including: <ul style="list-style-type: none"> <li>▪ Name of road and direction in which Event is taking place.</li> <li>▪ Location of where Event begins and ends. <ul style="list-style-type: none"> <li>○ &gt; indicates an Event from a location, to a location.</li> <li>○ &lt; &gt; indicates an Event between locations.</li> </ul> </li> <li>▪ Type of Event.</li> </ul>

## How do I view traffic details?

From the *Event list* screen, tap the event you want to view. The *Event details* screen will display.



	Item	Description
1		Tap to return to the previous screen.
2	<b>Event icon and description</b>	Displays details of the Event, including: <ul style="list-style-type: none"><li>Name of road and direction in which Event is taking place.</li><li>Location of where Event begins and ends.<ul style="list-style-type: none"><li>&gt; indicates an Event from a location, to a location.</li><li>&lt; &gt; indicates an Event between locations.</li></ul></li><li>Type of Event.</li></ul>
3	<b>Avoid</b>	Tap to initiate a new route to avoid the event. Only available if a detour or re-route is available.  The Unavoid Area button is displayed when a re-route has been calculated.
4	<b>Detour information</b>	Displays details of detour recommendation, if any.

## How do I know if a detour is recommended?

When a Traffic or Clearance event occurs on your route, a detour will often be recommended. The detour event message will display in the status bar on map screens.

Detours are only recommended for Traffic or Clearance Events on a calculated route.

## How do I avoid an event on my route?

- From the *Event list* screen, tap the event. The *Event details* screen will display.
- If a detour has been calculated to avoid an event on your route, **Avoid** is available; tap to accept the new route and avoid the event. The *Map* screen will display.

## Traffic messages

The *Event details* screen displays detour status information.


### Detour Not Available messages

If a detour is not available, one of the following messages will display:

Message	Description
This Event is not locatable This clearance is not locatable	A specific location for the Event cannot be identified.
This Event does not affect your route This clearance does not affect your route	The Event is not on the current leg of your journey, or is behind your current position.
You are avoiding this Event You have accepted this clearance	The Event is not on the current leg of your journey.
You are too distant to re-route You are too distant to accept this clearance	The Event is currently too distant to affect your journey.
Detour not found Clearance route not found	A detour / re-route could not be calculated.

### Detour Recommended messages

If a detour is recommended, one of the following messages will display:

Message	Description
Finding detour.... Recalculating route.....	Your Mio is calculating a new route. During calculation, the % complete will display.  Exiting this screen before the new route is calculated will cancel the operation.
Detour distance..... Clearance change	A detour has been calculated. The difference between the distance of your current route and the proposed route is displayed.

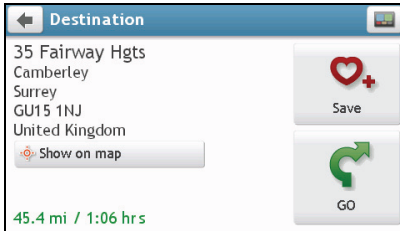
# My Places

---

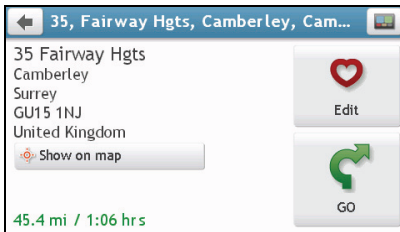
My Places has all your saved locations.

## How do I save a location as My Place or Home?

1. Search for an address until the *Preview* screen is displayed.



2. Tap . The *Save* screen will display. The location has been added to My Places.

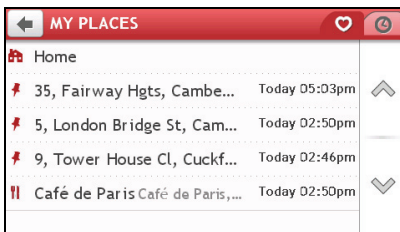


3. To save the location as Home, tap . The *Edit* screen will display.

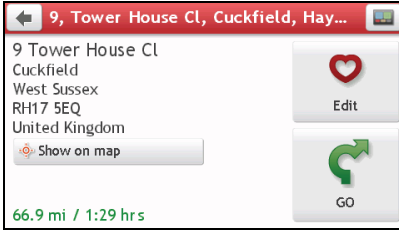
Tap . The location has been set as Home.


## How do I navigate to a location I have saved?

1. Tap . The *My Places* screen will display.





2. Tap the favourite destination you want to travel to.  
The *Preview* screen will display.

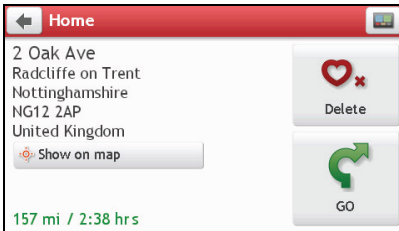



3. Tap .  
Your Mio will calculate the route from your current location. The *Map* screen will display.

## How do I navigate to Home?

If you have not set an address as Home, the first time you try to navigate to Home you will be prompted to search for an address using the address-entry wizard.



1. Tap .  
The *My Places* screen will display.
2. Tap **Home** (  ).  
The *Preview* screen will display.

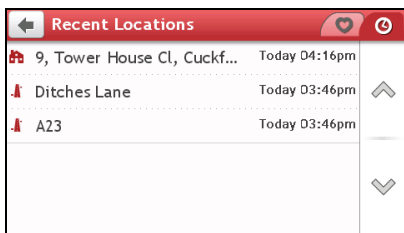


3. Tap .  
Your Mio will calculate the route from your current location. The *Map* screen will display.

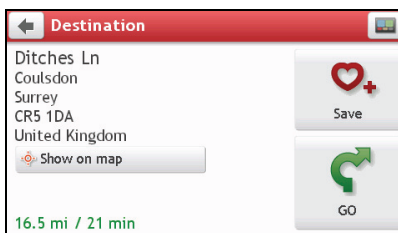
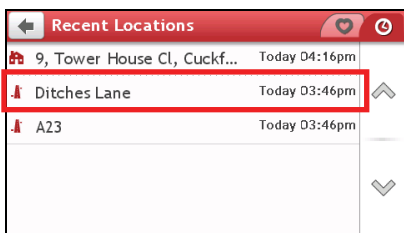
## How do I navigate to a recent place?


To make navigating to an address easier, your Mio will automatically save all your start locations and destinations in a list of recent places.

1. Tap .  
The *My Places* screen will display.
2. Tap .  
The *Recent Locations* screen will display.






3. Tap a recent place.  
The *Preview* screen will display.






4. Tap .  
Your Mio will calculate the route from your current location. The *Map* screen will display.


## How do I edit the name of a location in My Places?

1. Tap .  
The *My Places* screen will display.
2. Select a location to edit.  
The *Preview* screen will display.
3. Tap .  
The *Edit* screen will display.
4. Tap .  
The *Keyboard* screen will display.
5. After you have edited the name, tap **OK**.

## How do I delete a saved location?

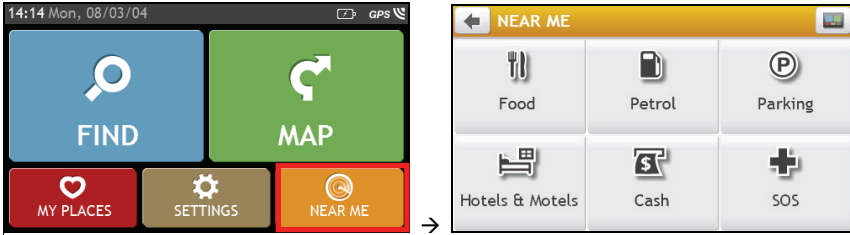
1. Tap .  
The *My Places* screen will display.
2. Select the location you would like to delete.  
The *Preview* screen will display.
3. Tap .  
The *Edit* screen will display.
4. Tap .  
The location is deleted.







# How do I import a location to My Places from Google Maps?

1. Make sure that MioMore Desktop is installed on your computer, and your computer is connected to the Internet.
2. Connect your Mio to your computer via the USB cable (may be sold separately).
3. On your computer, go to the Google Maps website ([maps.google.com](https://maps.google.com)).
4. Search for a place located within your map set.
5. Click  on the top-right corner of the screen.
6. On the pop-up screen, select **GPS**, confirm the place's name, select the proper brand name, and then click **Send**.
7. Confirm the brand name and your model number.
8. Follow the prompts to complete the process.


# What is NEAR ME?

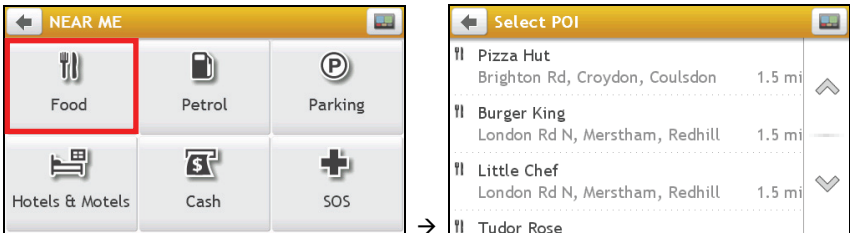
NEAR ME services allow you to quickly search the local area for common types of important POIs.





-  Search for the nearest restaurants, cafes, fast-food premises and other dining establishments.
-  Search for the nearest petrol stations.
-  Search for the nearest parking places.
-  Search for the nearest hotels and motels.
-  Search for the nearest banks and ATMs.
-  Search for the nearest emergency services, including hospitals and police.

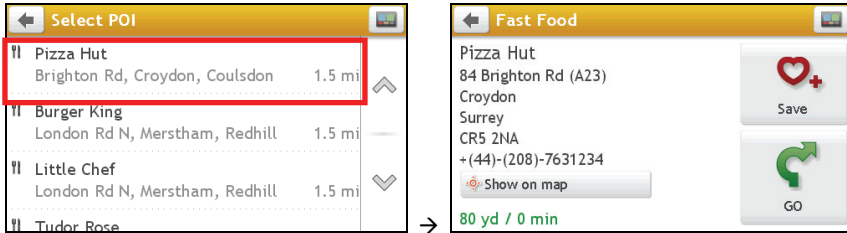
## How do I search for a POI using NEAR ME?

1. Tap 
2. Select the desired POI category (for example, Food). The search result will be listed in the *Select POI* screen.









3. Tap  or  to scroll up or down the list. Select the desired item to display the destination screen.



4. Complete the following:

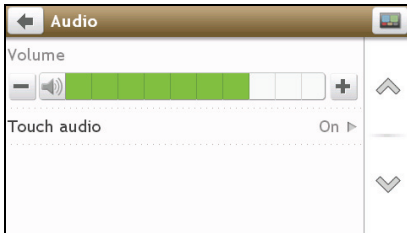
If you want to ...	Then ...
calculate the route, open the <i>Map</i> screen and start navigating	<ul style="list-style-type: none"> <li>▪ tap  <p>The <i>Map</i> screen will display.</p> </li> </ul>
save the location as a favourite	<ul style="list-style-type: none"> <li>▪ tap  <p>The location will be saved in My Places immediately.</p> </li> </ul>
save the location as Home	<ul style="list-style-type: none"> <li>▪ tap  →  <p>The <i>Edit</i> screen will display.</p> </li> <li>▪ tap <b>Save as Home</b>.</li> </ul>
explore the map	<ul style="list-style-type: none"> <li>▪ tap <b>Show on map</b>.</li> </ul>

# What can I customise?






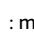
There are various customisation options available to enhance your navigation experience.



## Audio

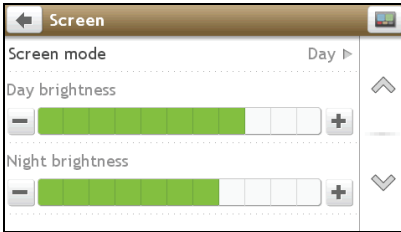


Complete the following:





If you want to ...	Then ...
increase/decrease the volume	tap  /  . The volume bar indicates the current volume level.  You can simply tap on the <b>Volume</b> bar so that the volume will be set immediately at the position you tapped.
mute or unmute	tap  . The speaker icon indicates the status:  : muted  : unmuted
hear which letter you have tapped when you tap the touch screen	tap the <b>Touch audio</b> option to turn it <b>On</b> or <b>Off</b> .

- Your preferences are automatically saved.


# Screen



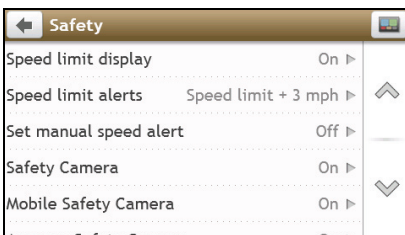
Complete the following:

If you want to ...	Then ...
change the displayed screen mode	tap Screen mode and select: <ul style="list-style-type: none"> <li>▪ <b>Auto:</b> set to automatically change between Day and Night modes.</li> <li>▪ <b>Day:</b> set the screen to be displayed in Day mode.</li> <li>▪ <b>Night:</b> set the screen to be displayed in Night mode.</li> </ul>
change the screen brightness in day mode	tap  /  on Day brightness bar The brightness bar indicates the brightness level in day mode. <b>Warning:</b> Your Mio can heat up when the brightness scale is set high, therefore, use lower brightness whenever acceptable.
change the screen brightness in night mode	tap  /  on Night brightness bar The brightness bar indicates the brightness level in night mode. <b>Warning:</b> Your Mio can heat up when the brightness scale is set high, therefore, use lower brightness whenever acceptable.

- Your preferences are automatically saved.

 You can simply tap on the brightness bar so that the screen brightness will be set immediately at the position you tapped.

# Safety



Complete the following:

If you want to ...	Then ...
enable/disable speed limit alerts, which warn you of the speed limit on any given road	<ul style="list-style-type: none"> <li>▪ tap the <b>Speed limit display</b> option to turn it <b>On</b> or <b>Off</b>.</li> <li>▪ tap <b>Speed limit alerts</b> and select:               <ul style="list-style-type: none"> <li>○ <b>Off</b>: disable the speed limit alert.</li> <li>○ <b>Auto</b>: set the system to alert automatically while your speed is above the limit.</li> <li>○ <b>Speed limit + 3 mph (Speed limit + 5 km/h)</b>: set the system to alert while your speed is 3 mph (5 km/h) or more above the limit.</li> <li>○ <b>Speed limit + 7 mph (Speed limit + 10 km/h)</b>: set the system to alert while your speed is 7 mph (10 km/h) or more above the limit.</li> </ul> </li> </ul>
set the speed limit alerts manually	tap <b>Set manual speed alert</b> to select the speed limit or turn it off.
set how you want to be notified of safety cameras	tap the <b>Safety Camera / Mobile Safety Camera / Average Safety Camera / Red Light Camera</b> option to turn it <b>On</b> or <b>Off</b> .

- Your preferences are automatically saved.

## Maps

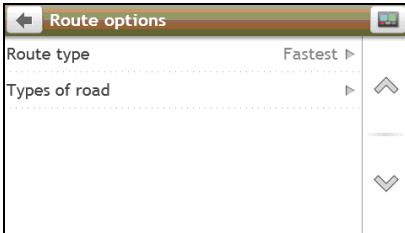


Complete the following:


If you want to ...	Then ...
view the map information	tap <b>Map Version</b> to display a list of all maps, providing the following information: <ul style="list-style-type: none"> <li>▪ Name</li> <li>▪ Date</li> <li>▪ Version/Build number</li> <li>▪ Coverage area</li> </ul>
change the map colour scheme	tap <b>Map scheme</b> , then select a colour scheme from the list.
select a set of maps to load	tap <b>Map sets</b> , then select your preference from the list.

- Your preferences are automatically saved.

## Route options



Complete the following:

If you want to ...	Then ...
set route type options for your route	<ul style="list-style-type: none"> <li>▪ tap <b>Route type</b>. The <i>Route type</i> screen will display. Select your route type preference from the list:                             <ul style="list-style-type: none"> <li>○ <b>Fastest</b> – The route that should be the fastest when navigating.</li> <li>○ <b>Shortest</b> – The route with the shortest physical length.</li> <li>○ <b>Easiest</b> – The simplest route with the least number of turns and favours motorways where appropriate.</li> <li>○ <b>Economical</b> – The route with least number of stops, turns and urban areas which should save on fuel usage.</li> </ul> </li> </ul>
set types of road options for your route	<ul style="list-style-type: none"> <li>▪ tap <b>Types of road</b>. The <i>Types of road</i> screen will display. Select your road preference form the list.</li> </ul> <p> Avoiding ferry routes may prevent you from navigating between certain countries, even when a bridge or tunnel exists.</p>

- Your preferences are automatically saved.

## Language

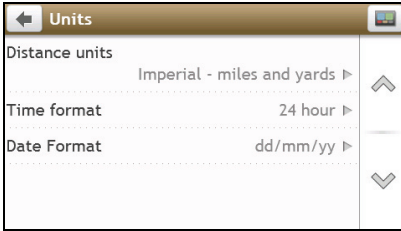


Complete the following:

If you want to ...	Then ...
change the on-screen language	tap <b>Language</b> and select your preferred language from the list.
change the voice scheme	tap <b>Voice</b> and select your preferred voice scheme from the list.

- Your preferences are automatically saved.

# Units

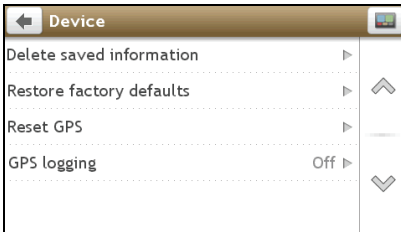


Complete the following:



If you want to ...	Then ...
change the distance units	tap <b>Distance units</b> and then select your preferred distance unit type.
change the time format	tap <b>Time format</b> and then select your preferred time format.
change the date format	tap <b>Date Format</b> and then select your preferred date format type.


- Your preferences are automatically saved.

# Device



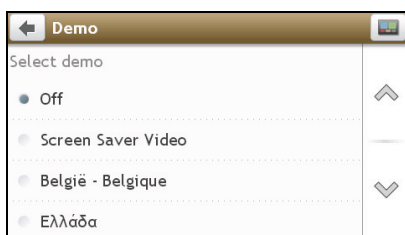
Complete the following:

If you want to ...	Then ...
delete the saved information in your Mio	<p>tap <b>Delete saved information</b></p> <ul style="list-style-type: none"> <li>Tap <b>Delete My Places</b> and tap <b>Yes</b> when the warning dialog box displays. The data saved in My Places will be deleted.</li> <li>Tap <b>Delete recent locations</b> and tap <b>Yes</b> when the warning dialog box displays. The data of recent locations will be deleted.</li> </ul>
restore factory default settings	<p>tap <b>Restore factory defaults</b>. When the warning dialog box displays, tap <b>Yes</b>. Your Mio will restart.</p> <p> The <b>Restore factory defaults</b> option allows you to restore default factory settings but will not delete recent locations or saved My Places destinations.</p> <p> When you restore factory defaults, your LearnMe profile will be cleared from the device.</p>



If you want to ...	Then ...
reset the GPS	tap <b>Reset GPS</b> . When the warning dialog box displays, tap <b>Yes</b> .   Occasionally, the GPS fix may need to be reset. This may occur if the receiver has been transported a long distance since last being used; for example, to a different country, and is still trying to establish the previous position.
record a GPS log of your trip	tap the <b>GPS logging</b> option to turn it <b>On</b> or <b>Off</b> .

- Your preferences are automatically saved.

## Demo

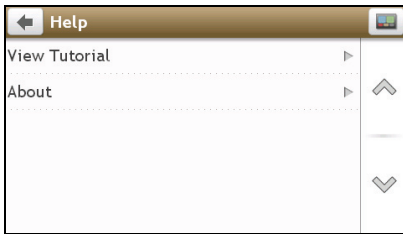


Complete the following:

If you want to ...	Then ...
enable a shop demonstration of Mio Spirit to be played	select a demonstration country from the list and tap <b>Start</b> .  Tap <b>OK</b> . Your Mio will restart.  When your Mio is in Shop demo mode, you will see the navigation demonstration of the pre-defined route without having to set a destination.   You cannot operate your Mio properly in Shop demo mode.
enable the screen saver feature on your Mio	tap <b>Screen Saver Video</b> .  When your Mio is idle for 10/30/60 minutes, the screen saver will display.   The screen saver will only display if your Mio is connected to a power supply.

- Your preferences are automatically saved.

# Help



Tap **About** to display copyright and trademark information.



# What is MioMore Desktop?

---

MioMore Desktop is a suite of tools you can use to access greater functionality and product information via your computer.


MioMore Desktop allows you to:

- obtain software updates
- manage maps
- manage custom POIs
- manage safety camera subscriptions
- browse the Mio website for special offers


## Can I use MioMore Desktop with my computer?

Ensure your computer has the following *minimum* system requirements before installing MioMore Desktop:

- IBM compatible PC
- Microsoft Windows XP SP2/SP3, Windows XP x64, Windows Vista, or Windows 7
- Internet Explorer 6, 7 & 8
- DVD drive
- USB port
- Internet connection for activation

 Microsoft .NET 2.0, 3.0 and 3.5 will be installed on your computer as part of the installation of MioMore Desktop.

## How do I install MioMore Desktop onto my computer?

 **Before you begin:** Ensure that your computer meets the minimum system requirements for MioMore Desktop, especially:


- i. Ensure that *Internet Explorer 6* or higher is installed on you computer before you install MioMore Desktop, even if it is not your default browser.
- ii. Windows XP users, ensure that *Windows XP Service Pack 2* or higher has been applied before you install MioMore Desktop.

**CAUTION:** When your Mio is turned on and connected to a computer, it is recognised as an external mass-storage device. Do NOT delete any files that are pre-installed on your Mio. Deleting the files can cause your Mio to crash.

1. Close all programs on your computer.
2. Insert the MioMore Desktop Application Installer DVD into your computer DVD drive. The MioMore Desktop installer will start.

If your computer does not automatically launch the DVD, start the installation manually: *Start* → *Run*. Type **D:\install.exe** where "D" is the letter assigned to your DVD drive, then click **OK**.

3. Select your preferred language for MioMore Desktop.
4. Click **Install Software**, then **Install MioMore Desktop**.
5. Follow the screen prompts to install MioMore Desktop:

- Review and accept the Licence Agreement for MioMore Desktop when prompted.
  - Select a destination folder for MioMore Desktop when prompted.
  - When the installation is complete, click **Finish**. MioMore Desktop will open.
6. If prompted to connect your Mio to your computer, complete the following:
- Plug the large end of the USB cable (may be sold separately) directly into a USB port on your computer (not a USB hub) and plug the small end into the USB Socket (  ) on your Mio.



Where possible, plug the USB cable into a USB port at the back of your computer.

- Briefly press the power button to turn on your Mio.  
The following screen will display on your Mio:



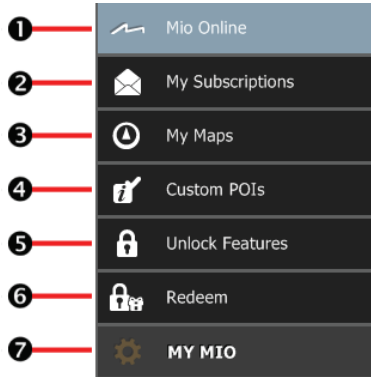
If prompted to update your Mio software, follow the on-screen prompts.

7. You are now ready to use MioMore Desktop for your Mio.

From now on, you can access MioMore Desktop via: **Start → All Programs → Mio → MioMore Desktop**.

# MioMore Desktop Menu

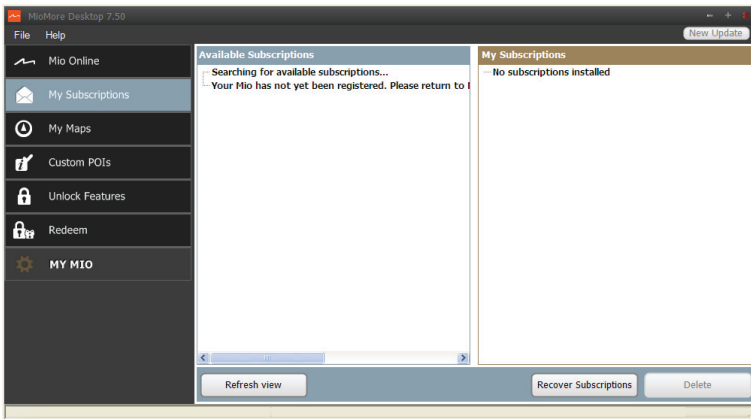
 Depending on your Mio model, certain MioMore Desktop Menu options may not be available.




	Component	Description
①	Mio Online	Display the Mio website, Mio Store and other online features.
②	My Subscriptions	Information on your current subscriptions, including safety camera subscriptions.
③	My Maps	Install and manage maps.
④	Custom POIs	Application that allows you to import custom POIs.
⑤	Unlock Features	Allow you to enter the activation key for the service you purchased.
⑥	Redeem	Allow you to enter the product key for lifetime map update service.
⑦	MY MIO	A collection of applications that allow you to configure MioMore Desktop, download updates, and transfer data to and from your Mio.

# My Subscriptions

MioMore Desktop → My Subscriptions



 Subscription information is not available on all models and is only available in selected countries.

Your Mio contains pre-loaded subscriptions, such as safety camera and travel book information. For the latest subscription updates, visit: [www.mio.com](http://www.mio.com)

 Safety Camera alerts can be set to enable a warning sound or visual warning when on your route.

## How do I purchase a subscription?

1. Select a type of subscription. A list of regions will display.
2. Select a region. A list of available subscriptions will display.
3. Select a subscription or offer, then click **Purchase an activation key from the Mio store**. The Mio Store website will open.
4. Follow the prompts to purchase your subscription.

A product key will be sent to you via email when you have subscribed. You will need to use this product key to activate your subscription.


## How do I activate my subscription?

MioMore Desktop → Unlock Features

1. Enter your product key.
2. Follow the prompts to activate your subscription.

## How do I update subscriptions on my Mio?

The My Subscriptions section will display a list of subscriptions already installed on your Mio:


Icon	Description
Red	Expired subscriptions. <ul style="list-style-type: none"><li>▪ Right click to purchase a new subscription.</li></ul>
Yellow	Available subscriptions. <ul style="list-style-type: none"><li>▪ Right click to update and purchase new subscription.</li></ul>
Green	Active subscriptions.  No updates are available for these subscriptions.

## How do I recover my subscription?

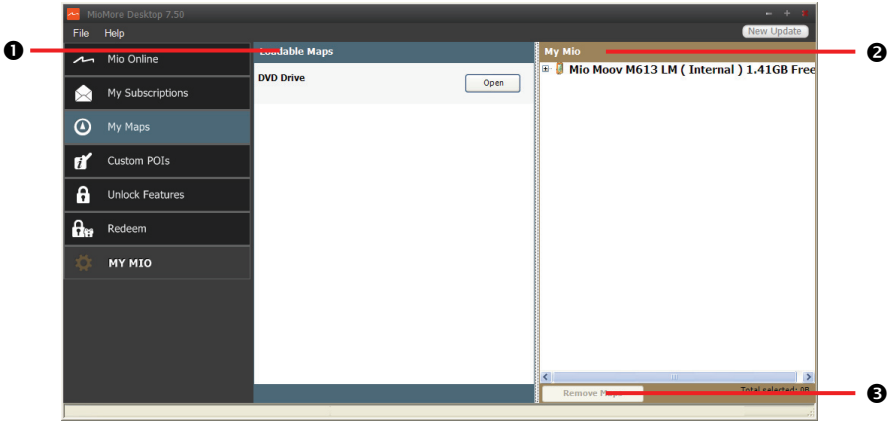
If your subscriptions are deleted and you want to recover them, click **Recover Subscriptions** at the bottom-right corner in My Subscriptions to recover all subscriptions.

# My Maps

**My Maps** allows you to install new maps, remove maps from your Mio and purchase new maps.

 The downloaded/purchased map (\*.iso) from Mio Store website will be saved on your computer's map folder (e.g. C:\username\Documents\Maps) and then displayed in My Maps. The default map folder may vary depending on your Operating System. You can change the setting of MioMore Desktop to locate the map folder where you save the map by clicking *MY MIO* → *Options* → *My Maps* → *Change*.

*MioMore Desktop* → *My Maps*



	Component	Description
❶	<b>Loadable Maps</b>	A list of maps on the DVD or available for purchase via the Mio Store website. <ul style="list-style-type: none"><li>Select a map source (e.g. DVD Drive) and then click <b>Open</b> to display the Map Source section.</li><li>From the map Source section, click <b>Install Maps</b> to install the selected map to your Mio. Otherwise, click <b>Upwards</b> to return to the Loadable Maps section.</li></ul>
❷	<b>My Mio</b>	A list of maps installed on your Mio.
❸	<b>Remove Maps</b>	Click to remove the selected map from your Mio.




## How do I download a map update?

Occasionally Mio may offer you free updates, including software applications, maps, voice commands, and more. If a free map update is available and your Mio is connected to your computer, a message will display when you first start MioMore Desktop.

- From the pop-up message window, click **View** to display the *Device Updates* screen that contains the available updates.
- Select the desired map update and click **Download**. MioMore Desktop will start to download immediately.



Before downloading, you can change the download folder by clicking **Change Path**.


3. During the download operation, you can:
  - View the download status from the downloading bar.
  - Stop the download by clicking .
  - Pause the download by clicking  and then resume download at a later time by clicking .
4. When finished, the downloaded map update will be displayed in My Maps.

### How do I install maps onto my Mio?


Your Mio comes with one or more pre-activated maps. Map files take up space on your Mio's internal memory. If you do not use a map file, you can remove it to free up space. You can later reinstall it to your Mio if required.

You can install maps from the following:

- DVD that came with your Mio,
- The downloaded map update,
- The map that you have purchased separately to a memory card (for the models with the MicroSD slot) or your Mio internal memory.

 You may need to purchase a Map Product Key to activate maps on the DVD that came with your Mio.


1. Open MioMore Desktop, and then click **My Maps**.
2. Select a map source (e.g. DVD Drive when a Map DVD has been inserted into your computer DVD drive) and then click **Open** to display the Map Source section.
  - The maps already installed on your Mio are **green**.
  - The maps that are unlocked and ready to be installed to your Mio are **yellow**.
  - The maps that require activation before being installed to your Mio are **red**.
  - The maps that are available for purchase from Mio are **blue**.

 If your computer opens Windows Explorer when the DVD is inserted, close the Windows Explorer window.

3. Complete the following:

If the map to be installed is ...	Then ...
yellow	go to step 6.
red	the map needs to be activated via the Internet before it can be installed; continue to step 4.

4. If you connect to the Internet via a dial-up connection, connect to the Internet now.
5. Follow the prompts to activate your Map Product Key, including:
  - Enter the Map Product Key when prompted.
  - Your computer will connect to the Internet and activate your Map Product Key.
  - When activation has completed, the map will change colour to **yellow**; continue to step 6.
6. Click the map you want to install to your Mio. The map will change colour to a brighter **yellow** to indicate it has been selected. To deselect a map, click the map again.

 You may need to install multiple maps to cover the required geographical area.

7. Complete the following:

If you want to ...	Then ...
install a yellow map	go back to step 6.
install a red map	the map needs to be activated via the Internet before it can be installed; go back to step 4.
install the selected maps to your Mio	continue to step 8.

8. Select the destination media (Mio internal memory) for the selected maps, then click **Install Maps**. The selected maps will be installed and change colour to green.
9. To use your Mio, disconnect the USB cable. You may need to manually reset your Mio.



**WARNING:** Do not disconnect the USB cable from the Mio USB Socket until the installed map or maps have changed colour to green.

### How do I remove maps from my Mio?

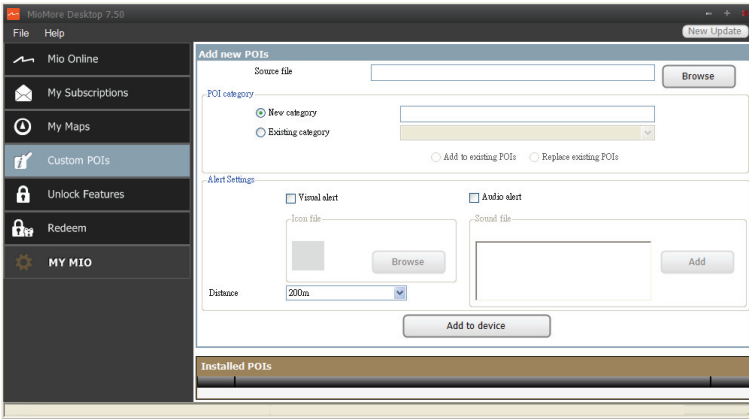
1. Open MioMore Desktop, and then click **My Maps**.
2. From the My Mio panel, select the check box next to the map you want to remove.
3. Click **Remove Maps** to remove the selected maps.
4. Confirm that you want to remove the selected map when prompted. The map is removed from your Mio. You can reinstall these maps at any time via MioMore Desktop.




# Custom POIs

 Depending on your Mio model, some Custom POIs features may not be available.


MioMore Desktop → Custom POIs



The **Custom POIs** (Points of Interest) application allows you to create or import your own POI files. These are called custom POIs. Unlike preinstalled POIs, custom POIs can be removed from your Mio and can have audio as well as visual alerts associated with them.

 To create your POI files, open Microsoft Excel and then enter the POI location details (including Longitude, Latitude, Name, and Description) in separate cells. Always use decimal degrees for coordinates and start a new location from a new line. When done, click **File** → **Save As** to save it as a \*.csv file. Now you have successfully created a POI CSV file. The following displays the example of creating the POI file by using Microsoft Excel:


	A	B	C	D
1	-0.29694	51.1076	Horsham	A market town on the upper reaches of the River Arun in the centre of the Weald, West Sussex.
2	-0.16258	51.14468	Gatwick Airport	London Gatwick Airport (IATA: LGW, ICAO: EGKK)
3				
4				

 Various POI files are available for download free or by subscription from third-party websites. Ensure that downloaded files are in .csv (Comma Separated Values) format. Mio is not responsible for the content or accuracy of the information or the reliability or availability of these websites. The use of information regarding safety camera locations may be subject to local laws in the country of use. You are responsible for checking that you can use the information in your country or in the country where the information will be used.




## How do I install custom Points of Interest?

1. In the **Add new POIs** section, click **Browse** to select a source file. The Open dialog box will open.
2. Select the file from your local or network drive, then click **Open**.
3. From the POI Category section:


If you want to ...	Then ...
use an existing custom POI category	select the <b>Existing category</b> option, then select a type from the drop-down list.

If you want to ...	Then ...
replace an existing POI	select the <b>Existing category</b> option and a type from the drop-down list, then select <b>Replace existing POIs</b> .  If you want to create a new POI instead, then select <b>Add to existing POIs</b> .
create a new custom POI category	select the <b>New category</b> option, then type a name for the POI category.

4. Set Alert setting as required:

If you want to ...	Then ...
enable a visual warning when a POI of this category is in close proximity	select the <b>Visual alert</b> check box.
select an icon to display on the <i>Map</i> screen for POIs of this category	click <b>Browse</b> to select the icon file from your local or network drive. <ul style="list-style-type: none"> <li>When you have located the icon file, select it and click <b>Open</b>.</li> <li>The icon file must be a bitmap (*.bmp or *.png) graphic with a minimum size of 6x6 pixels and a maximum size of 32x32 pixels.</li> </ul>  If you do not select a custom icon, a default icon will display.
select the distance from a POI of this category at which the visual warning should display or the warning chime should sound	select the distance from the <b>Distance</b> box.  To change the units used to measure distance for this POI category, from the tools menu click on options and from the general option select <b>Use metric units</b> check box.
enable a warning sound when a POI of this category is in close proximity	select the <b>Audio alert</b> check box.
select a custom sound alert file to play when a POI of this category is in close proximity	<ul style="list-style-type: none"> <li>either select a sound file from the list, or</li> <li>click <b>Add</b> to select a sound file (.WAV format) from your local or network drive. When you have located the file, select it and click <b>Open</b>.</li> </ul>  If you do not select a custom sound file, a default sound alert will play.

5. Click **Add to device** to add the POI to your Mio.

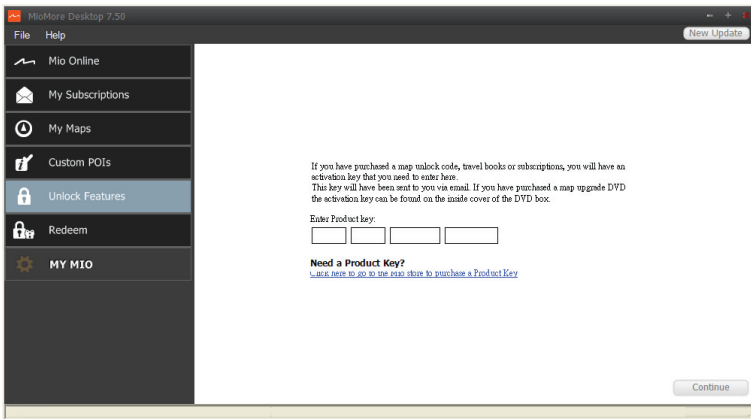
 Each file corresponds to a POI category; for example, Hotels.csv will be listed on your Mio as the Hotels category.

### How do I delete a Custom POI file/category from my Mio?



- In the Installed POIs section, click **Delete** next to the file name. The file is removed from the list, but is not yet deleted.
- Accept the warning message. The selected file/category is deleted.

# Unlock Features

MioMore Desktop → Unlock Features

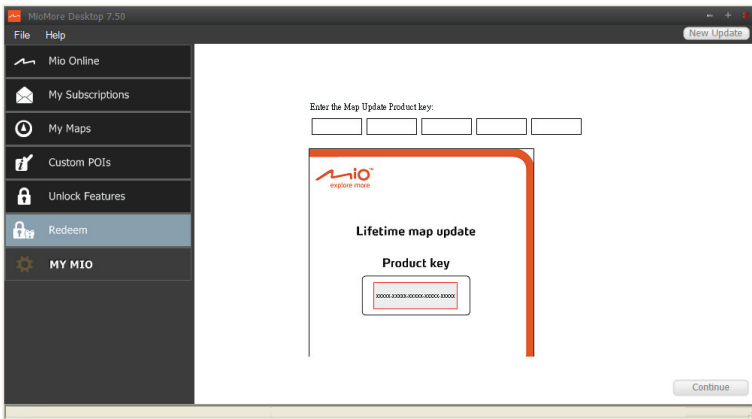


If you have purchased a map unlock code or subscriptions for your Mio, you have to enter the activation key using the Unlock Features application.



-  Make sure you have an active Internet connection for this feature.
-  The activation key will be sent to you by email, or printed on the inside cover of the box if you purchase the map update DVD. You can click the link on the screen to purchase an activation key online.

# Redeem

MioMore Desktop → Redeem



To redeem Mio's lifetime map update service, you need to enter the product key using the Redeem application. Please note that the product key can only be used once and is not transferable.

-  Make sure you have an active Internet connection for this feature.
-  The product key is printed on the flyer that is enclosed in the package.

# MY MIO

MioMore Desktop → MY MIO

## How do I change the displayed language for MioMore Desktop?

You can change the language for MioMore Desktop.


1. Click **Language**.
2. Select your preferred language.

## How do I install or remove a voice file for my Mio?

My Voices is a MioMore Desktop application that allows you to install or remove voice files on your Mio.

1. Click **My Voices**.
2. Complete the following:

If you want to ...	Then ...
install a voice file	in the Available voice files section, select the voice file you would like to install. <ul style="list-style-type: none"><li>▪ Click <b>Install selected voices</b>.</li></ul>
remove a voice file	in the Available voice files section, select the voice file you would like to remove. <ul style="list-style-type: none"><li>▪ Click <b>Remove selected voices</b>.</li></ul>

 Voice files take up space on your Mio's internal memory. If you do not use a voice file, you can remove it to free up space. You can later reinstall it to your Mio if required. The provided DVD of your Mio is needed while installing the voice file.

## How do I backup and restore my Mio?

You can save backups of data from your Mio, and later restore it if required.

1. Click **Backup and Restore**.
2. Complete the following:

If you want to ...	Then ...
backup your Mio	click <b>Create new backup</b> . <ul style="list-style-type: none"><li>▪ Select the data you would like to backup.</li><li>▪ Click <b>OK</b>. The backup will be saved to your computer. The backup will be listed on the <i>Backup &amp; Restore</i> window.</li></ul>
restore a backup to your Mio	select the backup from the list that you would like to restore. <ul style="list-style-type: none"><li>▪ Click <b>Restore</b>, then click <b>OK</b>. The backup will be restored to your Mio.</li></ul>
delete a backup	select the backup from the list that you would like to delete. <ul style="list-style-type: none"><li>▪ Click <b>Delete</b>, then click <b>OK</b>. The backup will be deleted.</li></ul>

## How do I recover maps and voice files for my Mio?

The **Smart Recovery** application allows you to recover all data to fix your Mio if a problem occurs during operation, including software, maps, voice files, and subscriptions.

1. Click **Smart Recovery**.



To use the Smart Recovery application to recover data, make sure you have an active Internet connection and the Installer DVD is inserted into your computer DVD drive.

- The available data will be displayed in the **Maps** and **Voices** fields. Select the desired data and click **Recover** to recover the data on your Mio.

### How do I manually update my Mio?




Occasionally Mio may offer you free updates, including software applications, maps, voice commands, and more. You can manually check the available updates via the Device Updates function.

- Click **Device Updates**. The *Device Updates* screen that contains the available updates will display.



You can also open the *Device Updates* screen by clicking the **New Update** button at the top-right corner of MioMore Desktop.

- Complete the following:

If you want to ...	Then ...
download the updates	select the available update from the list, and then lick <b>Download</b> . <ul style="list-style-type: none"> <li>You can view the download status from the downloading bar.</li> </ul>
stop/pause the download	during the download: <ul style="list-style-type: none"> <li>Click  to stop the download.</li> <li>Click  to pause the download; when paused, click  to resume downloading.</li> </ul>
change the download folder	click <b>Change Path</b> .

- When completed, the downloaded file will be saved to the assigned folder.
  - For software update, the \*.exe file will be launched automatically to install the update.
  - For map/voice command update, the system will display the *My Maps/Voice Command* screen automatically to install the update.

### How do I configure MioMore Desktop?



Depending on your Mio model, certain setting options may not be available.

- Click **Options**, and then select the desired setting options to configure.
- Complete the following:

If you want to ...	Then ...
keep MioMore Desktop updated	click <b>General</b> , and then select the <b>Auto check for updates</b> checkbox. <ul style="list-style-type: none"> <li>When you select this option, every time you open MioMore Desktop, the available service packs and bug fixes will be downloaded from the Mio server and applied to your Mio.</li> </ul>
change the units of measurement that MioMore Desktop uses	click <b>General</b> , and then: <ul style="list-style-type: none"> <li>select or clear the <b>Use metric units</b> checkbox to change between imperial and metric units.</li> <li>select or clear the <b>Use decimal degrees</b> checkbox to change between decimal degrees and latitude/longitude co-ordinates.</li> </ul>

If you want to ...	Then ...
change the location of where downloaded updates will be saved	click <b>My Maps</b> , and then click <b>Change</b> . <ul style="list-style-type: none"><li data-bbox="412 156 1034 212">▪ Select a folder for the updates. The downloaded updates are moved to the new location.</li></ul>

# For more information

## Point of Interest categories

Icon	Description	Icon	Description
	Airport		Amusement park
	Art centre		ATM/Cash dispenser
	Bank		Bar/Pub
	Beach		Breakdown service/Car repair facility
	Bowling centre		Business facility or company
	Business office		Bus station
	Camping ground		Car dealer/Automobile dealer
	Casino		Cemetery
	Church		Cinema
	City hall		City, town or village
	Coffee shop		College/University
	Community centre		Commuter railway station
	Courthouse		Dentist
	Doctor		Embassy
	Exhibition centre		Ferry terminal
	Fire Brigade		Golf course
	Government office		Grocery store
	Guest house		Higher education
	Hospital/Polyclinic		Hotel
	Ice skating		Important tourist attraction
	Information/Tourist information office		Library
	Marina/Yacht basin		Medical







Icon	Description	Icon	Description
	Monument		Motorcycle dealer
	Motoring organisation office		Mountain pass
	Museum		Music centre
	Natural attraction		Nightlife
	Park and ride		Parking
	Parking garage		Park/Recreation area
	Performance art/Theater		Petrol station
	Pharmacy		Place of worship
	Police station		Post office
	Public restroom/Toilet facilities		Public sport airport
	Railway crossing		Rental car agency
	Rest area		Restaurant
	Road accident black spot		Scenic/Panoramic views
	School		School zone
	Shop		Shopping
	Ski resort/Ski lift station		Speed check
	Sport centre		Sports hall
	Sports complex		Stadium
	Tennis court		Travel agency
	Transport ferry		Veterinarian
	Winery		Zoo



### Branded Points of Interest

Branded Points of Interest are available on some maps. These include well known restaurants, accommodation providers, tourist attractions, Petrol stations, etc. The icon will usually display the company logo.

## Point of Interest categories by subscription









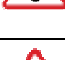







Icon	Description
	Safety Cameras
	Safety Camera (Mobile)
	Safety Camera (Average)
	Red Light Camera



## My Places categories

Icon	Description
	Home
	Saved locations





## Traffic and other TMC Events


Each TMC Event is sorted in to one of nine categories. When an Event is received, one of the following icons will display:

Event	Avoided Event	Message Type	Event Description
		<b>Danger</b>	There is a dangerous situation on the route; for example, people are on the road.
		<b>Traffic</b>	Any event that will cause a delay on a route.
		<b>Weather</b>	Weather conditions are adversely affecting a route; for example, there is ice on the road.
		<b>Warnings</b>	There is a situation of which you should be aware on the route, but it is not serious enough to be considered a dangerous situation; for example, a minor accident has taken place.
		<b>Forecast</b>	An event is expected to occur on a route.
		<b>Restrictions</b>	There is a restricted flow of traffic on a route; for example, a lane has been closed on a motorway.
		<b>Clearance</b>	A traffic event that has now been cleared.
		<b>Information</b>	All other events.

Event	Avoided Event	Message Type	Event Description
		<b>Roadworks</b>	Roadworks are taking place on a route.

If a *Traffic* or *Clearance* event has a recommended detour, the following icons will display:

Event	Avoided Event	Message Type	Event Description
		<b>Traffic Detour</b>	A <i>Traffic</i> Event, for which a detour is recommended.
		<b>Clearance Re-route</b>	A <i>Clearance</i> Event, for which a re-route is recommended.

 Avoided Event icons will only display on the *Map* screen, at the event location.

## Online support

For 24/7 help and support with Mio products, visit our Technical Support website at: [www.mio.com](http://www.mio.com)

## Mio Advantage

If you have a faulty product or you would like to speak to a member of our Technical Support team, register your Mio on Mio Advantage to obtain the Technical Support phone numbers for your region.

## Speed Limit

Mio products are designed to be used as an aid to safer driving. Mio does not condone speeding or any other failure to comply with your local traffic laws. It is your responsibility to drive within the posted speed limit at all times and to drive in a careful manner. Mio accepts NO liability whatsoever for you receiving any speeding fines or points on your license through using this device. Mio does not guarantee the accuracy of the data contained within this database either expressed or implied. In the event you receive a fine or any other penalty for speeding or contravention of any traffic law, or are involved in an accident, Mio is not responsible for any damages of any type. In some countries the data information regarding speed limits may conflict with local law and/or regulations. It is your responsibility to make sure that your use of the data is in compliance with local laws and/or regulations. Usage is at your own risk.

## Safety Camera POIs

Mio products are designed to be used as an aid to safer driving. You can receive messages to alert you to locations of safety cameras, which will enable you to monitor your speed through these areas. Mio does not warrant that all types and locations of safety camera data are available, as cameras may be removed, relocated or new cameras installed. Mio does not condone speeding or any other failure to comply with your local traffic laws. It is your responsibility to drive within the posted speed limit at all times and to drive in a careful manner. Mio accepts NO liability whatsoever for you receiving any speeding fines or points on your license through using this device. Mio does not guarantee the accuracy of the data contained within this database either expressed or implied. In the event you receive a fine or any other penalty for speeding or contravention of any traffic law, or are involved in an accident, Mio is not responsible for any damages of any type. In some countries the data information regarding safety or speed cameras may conflict with local law and/or regulations. It is your responsibility to make sure that your use of the data is in compliance with local laws and/or regulations. Usage is at your own risk.

## Disclaimer

Mio operates a policy of ongoing development. Mio reserves the right to make changes and improvements to any of the products described in this document without prior notice. Mio does not warrant that this document is error-free. The screenshots and other presentations shown in this manual may differ from the actual screens and presentations generated by the actual product. All such differences are minor and the actual product will deliver the described functionality as presented in this User Manual in all material respects.

## Copyright

© 2012 MiTAC International Corporation. Mio is either a registered trademark or trademark of MiTAC International Corporation and is used under licence by Mio Technology Limited. All rights reserved.

The software contains proprietary information of MiTAC International Corporation; it is provided under a licence agreement containing restrictions on use and disclosure and is also protected by copyright law. Reverse engineering of the software is prohibited.

No part of this publication may be reproduced, stored in a retrieval system, or transmitted in any form or by any means, electronic, mechanical, photocopying, recording or otherwise, without the prior written permission of Mio.

IQ Routes is a registered trademark of TomTom International BV

Microsoft, Windows, Windows Vista, Windows 7, and Internet Explorer are either registered trademarks or trademarks of Microsoft Corporation in the United States and/or other countries. All rights reserved.

© 2012 Microsoft Corporation. All rights reserved.

Location Identifiers © 2012 International Air Transport Association.

POI Data © 2012 InfoUSA.

The software is based in part on the work of the Independent JPEG Group.

All other trademarks and registrations are the property of their respective owners.

Revision: R00  
(3/2012)