



MOXF6/MOXF8 Remote Editor Owner's Manual

Contents

Special Notices	1
What is the MOXF6/MOXF8 Remote Editor?	2
Data structure of the MOXF6/MOXF8 Remote Editor	2
Operation flow from starting the application to closing it	3
MOXF6/MOXF8 Remote Editor Windows.....	6
Troubleshooting	13

Special Notices

- Copying of the commercially available music sequence data and/or digital audio files is strictly prohibited except for your personal use.
- The software and this owner's manual are exclusive copyrights of Yamaha Corporation.
- Copying of the software or reproduction of this manual in whole or in part by any means is expressly forbidden without the written consent of the manufacturer.
- Yamaha makes no representations or warranties with regard to the use of the software and documentation and cannot be held responsible for the results of the use of this manual and the software.
- The screen displays as illustrated in this Owner's Manual are for instructional purposes, and may appear somewhat different from the screens which appear on your computer.
- Windows is the registered trademarks of Microsoft® Corporation.
- Apple, Mac and Macintosh are trademarks of Apple Inc., registered in the U.S. and other countries.
- Steinberg and Cubase are the registered trademarks of Steinberg Media Technologies GmbH.
- The company names and product names in this Owner's Manual are the trademarks or registered trademarks of their respective companies.

This owner's manual assumes that you are already familiar with basic Windows/Mac operations. If you are not, please refer to the owner's manual which came with your Windows/Mac software before using the MOXF6/MOXF8 Remote Editor.

For information about hardware requirements, the interconnection of devices and the installation of the MOXF6/MOXF8 Remote Editor software, refer to the separate Installation Manual as well as the Owner's Manual for the respective MIDI device.

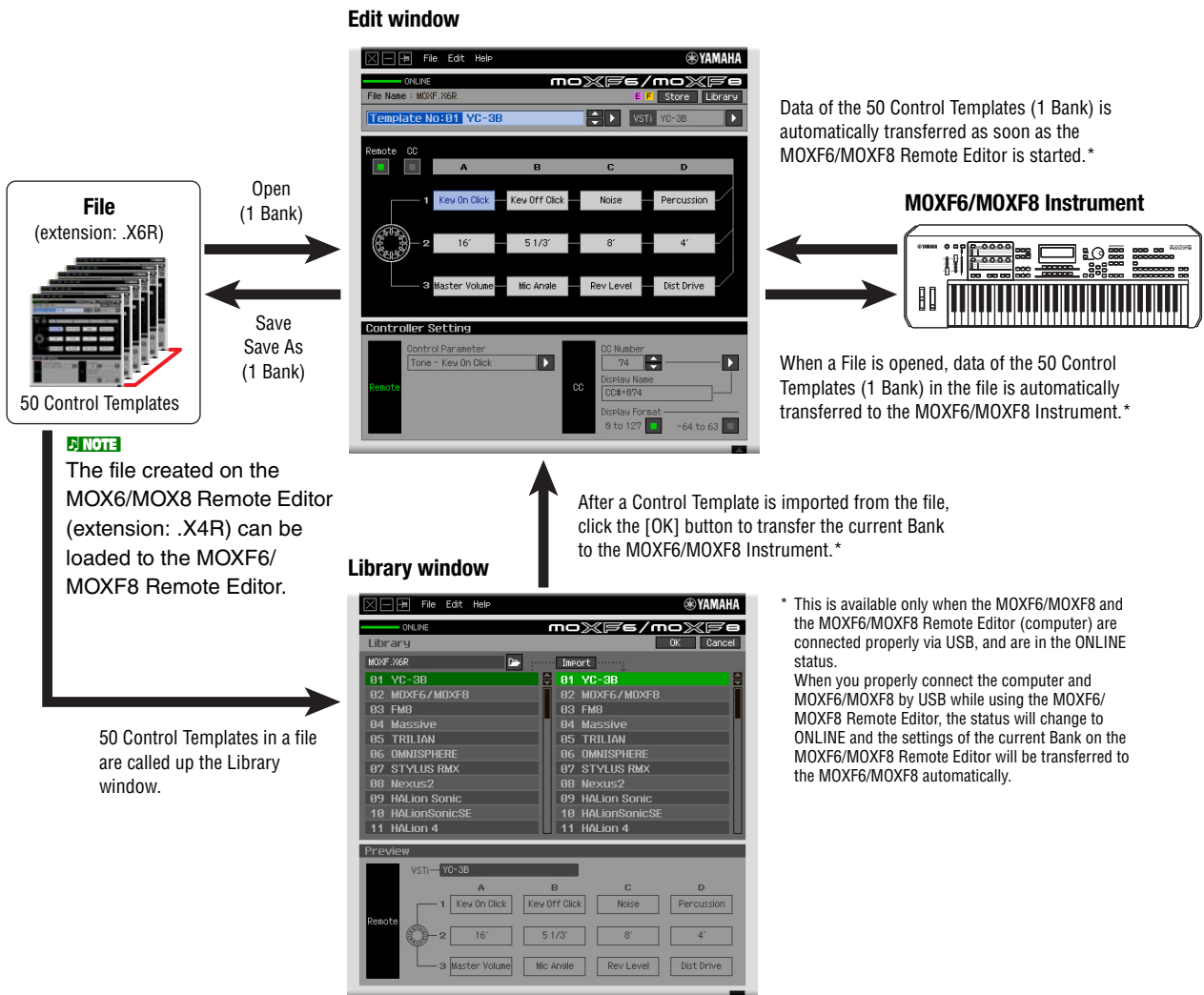
What is the MOXF6/MOXF8 Remote Editor?

MOXF6/MOXF8 Remote Editor is a convenient tool which lets you edit/create Control Templates for the MOXF6/MOXF8 Music Synthesizer. These Control Templates let you assign the appropriate functions for your favorite VSTi to the Knobs on the MOXF6/MOXF8. While the MOXF6/MOXF8 handles up to 50 Control Templates (in a single Bank), the MOXF6/MOXF8 Remote Editor can be used to create and organize multiple Bank files, each of which contain 50 Control Templates. Data of a single Bank containing 50 Control Templates created on the MOXF6/MOXF8 Remote Editor can be transferred from the computer to the MOXF6/MOXF8 and saved to the computer as a single Bank file (.X6R).

Data structure of the MOXF6/MOXF8 Remote Editor

Within the MOXF6/MOXF8 Remote Editor, you can select a Bank file then edit each one of the 50 Control Template contained in the selected Bank. After finishing your edits of the selected Bank (called “Current Bank”), save the Bank data to a file by using the “Save” or “Save As...” menu. The Bank data saved to the file can be recalled when starting the MOXF6/MOXF8 Remote Editor next time.

Refer to the illustration below to understand the data structure of the MOXF6/MOXF8 Remote Editor.



Operation flow from starting the application to closing it

The MOXF6/MOXF8 Remote Editor is a software contained in the MOXF6/MOXF8 Remote Tools. After installing the MOXF6/MOXF8 Remote Editor and related applications by following the Installation Guide of the MOXF6/MOXF8 Remote Tools, follow the instructions below. Before starting, make sure that the MOXF6/MOXF8 is properly connected to the computer via a USB cable. There is no single way to use the many components in the MOXF6/MOXF8 Remote Editor. Your editing needs and preferences may differ; however, the following example gives you a simple step-by-step guide in how to use the MOXF6/MOXF8 Remote Editor.

- NOTE** For details about connection between the MOXF6/MOXF8 instrument and a computer, refer to the Owner's Manual of the MOXF6/MOXF8.
- NOTE** On the MOXF6/MOXF8, press the [UTILITY] to enter the Utility mode, then press the [F6] MIDI followed by the [SF4] OTHER. On this display, set the MIDI In/Out parameter to "USB," then press the [STORE] button to store this Utility setting.
- NOTE** After completing installation of the MOXF6/MOXF8 Remote Editor, start the DAW software once then quit it. This operation is necessary to scan through the DAW software for obtaining the VSTI-related information. Only DAW software produced by Steinberg (such as Cubase) can be scanned.

1. Start the MOXF6/MOXF8 Remote Editor with the following operations.

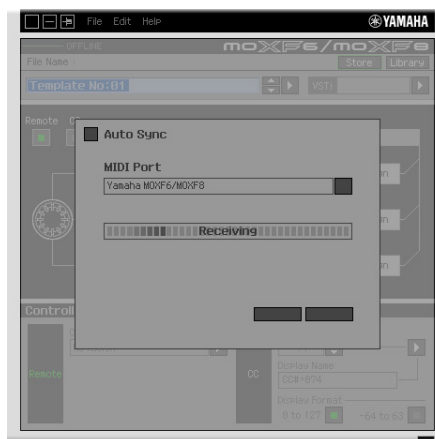
Windows

[Start] → [All Programs] → [Yamaha MOXF6_MOXF8 Remote Editor] → [MOXF6_MOXF8 Remote Editor]

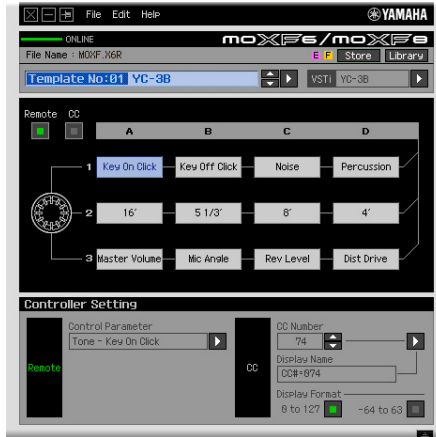
Mac

[Applications] → [Yamaha] → [MOXF6_MOXF8] → [MOXF6_MOXF8 Remote Editor]

The Auto Sync window appears and the settings of the 50 Control Templates on the MOXF6/MOXF8 are transferred automatically to the Current Bank (page 9) of the MOXF6/MOXF8 Remote Editor.

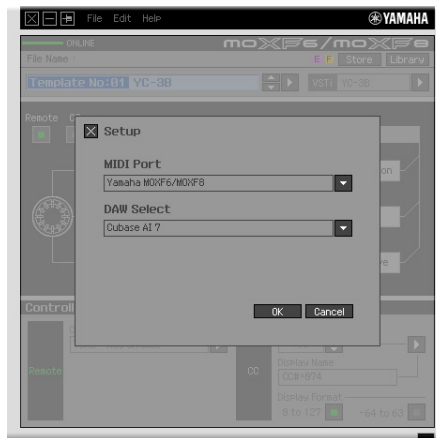


After transfer has been successfully completed, the Edit window appears.



NOTE If data transfer in the Auto Sync window fails even when the MOXF6/MOXF8 and computer are connected properly, make sure to set the MIDI In/Out parameter to “USB” and the Device Number parameter to “1” or “All” in the Utility MIDI display on the MOXF6/MOXF8.

2. Select “Setup” from the [File] menu to call up the Setup window.



3. Confirm that the MIDI Port is set to “Yamaha MOXF6/MOXF8,” then select the desired DAW software from the DAW Select column.

If the MOXF6/MOXF8 and the MOXF6/MOXF8 Remote Editor are connected properly via USB, you can confirm that the MIDI Port is set to “Yamaha MOXF6/MOXF8” when the above window appears. The DAW selection is necessary for performing the Scan operation (“VSTi Database” menu in the [File] menu) and obtaining the VSTi-related information.

4. Click [OK] to start the Scan operation.

The VSTi plug-ins registered to the specified DAW software will be scanned and the information necessary for editing will be obtained.



After the scanning is completed, the previous display will appear. The setup of the MOXF6/MOXF8 Remote Editor is finished.

NOTE If the VSTi scanning is not performed when you click [OK] in step 4, select [File] → [VSTi Database] → [Full Scan] to execute scanning.

5. Start the DAW software (for example, Cubase).

6. Press the [DAW REMOTE] button on the MOXF6/MOXF8 instrument to enter the Remote mode.

7. Select the Control Template, then edit the selected Control Template on the Edit window.

Perform the editing referring to the “MOXF6/MOXF8 Remote Editor Window (page 6)” and “Menu (page 9).” When the ONLINE status is turned on (when the MOXF6/MOXF8 and the MOXF6/MOXF8 Remote Editor are connected properly via USB), setting the parameters on the MOXF6/MOXF8 Remote Editor affects the settings of the same parameters on the MOXF6/MOXF8 in real time. This gives you a convenient and useful way to edit while actually controlling the VSTi.

NOTE Make sure to execute the [STORE] (page 6) operation before turning off the MOXF6/MOXF8 instrument. Otherwise the edited Template data in the instrument will be lost.

8. After your editing session is finished, select [File] → [Save] (or [Save As...]) to save the bank to a file.

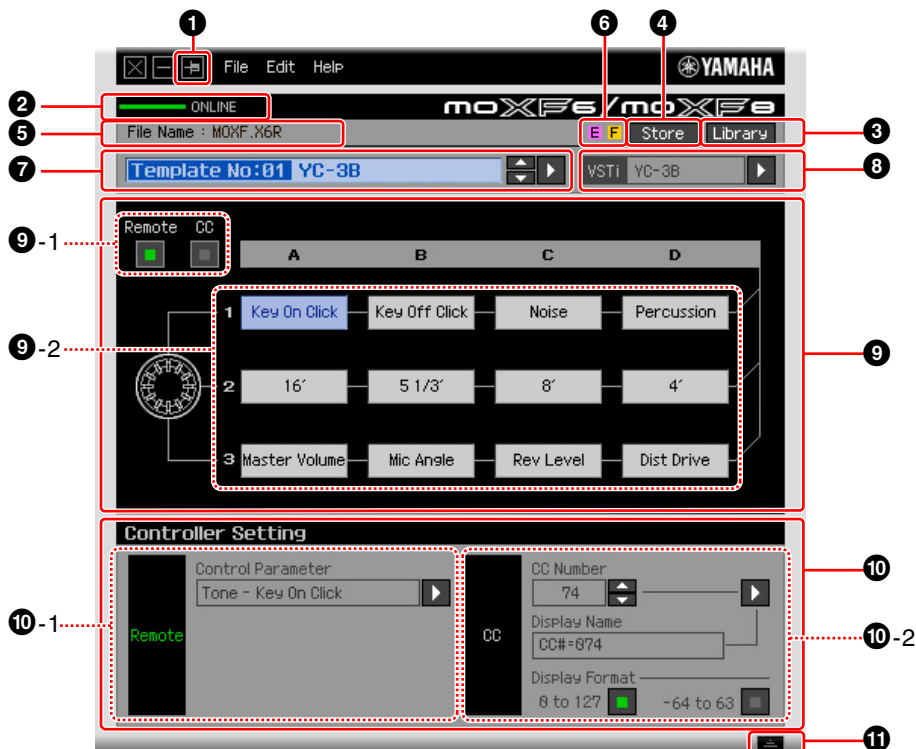
9. Click at the top left corner to quit the MOXF6/MOXF8 Remote Editor.

If the edited Bank data has not been saved yet, messages appear prompting you to save it. Save a Bank file to quit the MOXF6/MOXF8 Remote Editor.

MOXF6/MOXF8 Remote Editor Windows

The MOXF6/MOXF8 Remote Editor consists of two windows: Edit and Library. The Edit window lets you edit the settings of the selected Control Template while the Library window lets you import or copy Control Templates.

Edit window



1 Always on Top button

Turning this button () on keeps the MOXF6/MOXF8 Remote Editor's window always on top.

2 ONLINE indicator

Shows whether the MOXF6/MOXF8 Remote Editor and the MOXF6/MOXF8 are properly connected via USB (ONLINE status). In the ONLINE status, this indicator lights in green and any operations on the MOXF6/MOXF8 Remote Editor automatically change the parameter value on the MOXF6/MOXF8.

3 Library button

Calls up the Library window (page 9).

4 [Store] button

Calls up the Store confirmation window. On this window, clicking [YES] executes the Store operation while clicking [NO] returns the Editor to the original status without any operation. The Store operation will store all the 50 templates which are being edited to the Current Bank.

5 File Name

Displays the file name including the current edited Template.

6 E / F mark

Shows the Editing status of the Control Template or Bank. The **E** mark indicates that the current Control Template has been modified but not yet stored. This indicator disappears if you click the **4** [Store] button and then execute the Template Save operation. The **F** mark is also used to indicate that the current Bank has been modified but not yet saved to a File. This indicator disappears if you execute the File Save operation.

7 Control Template Selection box

Shows the currently selected Control Template. You can select the previous/next template by clicking the scroll button at the right of this box, or select any template in the current bank by clicking the triangular button.

8 Instrument Select box

Shows the VSTi name which is controlled by the Knobs. You can change the VSTi by clicking the triangular button then selecting the desired one. You can also input the VSTi name directly in this box manually. Make sure to input the VSTi name correctly.

NOTE If the desired VSTi is not shown even when you click the triangular button, refer to the Troubleshooting section on page 13.

9 Edit section

The Knobs illustrated here correspond to the Knobs on the top panel of the MOXF6/MOXF8. Here, you can assign the desired function to each of the Knobs.

9-1 Remote/CC buttons

When Remote is selected, using the Knobs generates the Remote Control messages exclusive for Cubase. When CC is selected, using the Knobs generates MIDI Control Change messages.

9-2 Function Assignment boxes

The Knobs illustrated here are equivalent to the Knobs on the MOXF6/MOXF8. Each of the boxes at the right side of the Knob shows the function assigned to the corresponding Knob. (The function shown here differs depending on the Remote/CC button status.) You can change the function assigned to each of the Knobs by clicking a desired box, then selecting the desired function in the **10** Controller Setting section. In the ONLINE status, setting this parameter changes the settings of the MOXF6/MOXF8 in real time.

10 Controller Setting section

Determines the function of the Knobs corresponding to the column selected in the **9** Edit section. There are two sections here: Remote section and CC (Control Change) section.

10-1 Remote section

Assigns the function to the Function Assignment box selected in the **9** Edit section. The setting here is available when the Remote/CC button is set to "Remote." Clicking "Remote" at the left of this section also sets the Remote/CC button of the Edit section to "Remote."

- Control Parameter**

Click the triangular button to call up the menu, then select the desired function.

10-2 CC (Control Change) section

Assigns the function to the Function Assignment box selected in the 9 Edit section. The setting here is available when the Remote/CC button is set to "CC." Clicking "CC" at the left of this section also sets the Remote/CC button of the Edit section to "CC."

- **CC Number (Control Change Number)**

Determines the Control Change number. Selects the Control Change number by clicking one of the scroll buttons at the right of this box. You can also input the Control Change number directly.

- **Display Name**

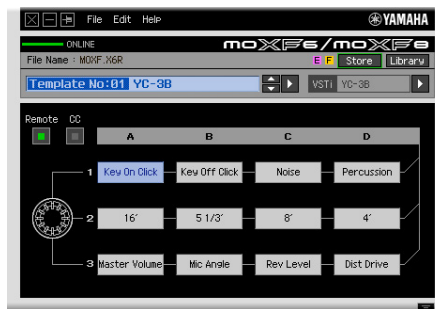
Selects the Knob's function name which is to be shown on the display of the MOXF6/MOXF8 when the Remote/CC button of 9 Edit section is set to "CC." Click the triangular button at the right of this box, then select the desired one. You can also input the name directly.

- **Display Format**

Sets the value format shown on the display of the MOXF6/MOXF8 to "0 – 127" or "-64 – +63."

11 Detail button

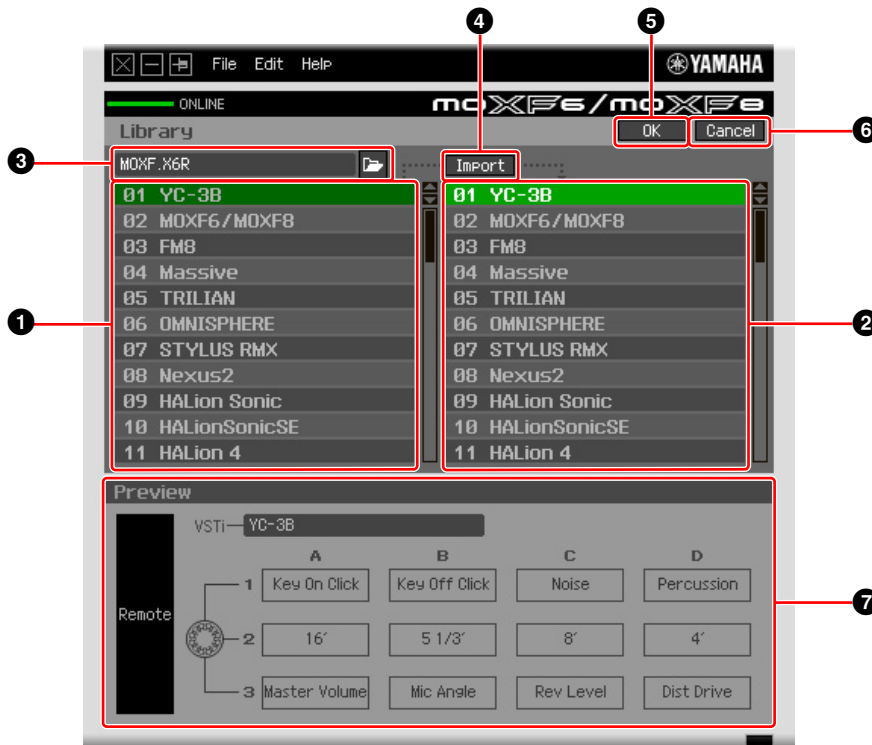
Clicking this button closes the Controller Settings section. Click this again to open the Controller Settings section.



When closing the Controller Settings section

Library window

Clicking the Library button on the Edit window opens the Library window.



1 Control Template List in the File

Displays a list of the Control Templates saved in the File. Select a target Control Template in this list and a destination location in the 2 Control Template List of the Current Bank, then click the 4 [Import] button to execute the Import operation. You can view the contents of the selected Control Template in the 7 Preview section.

NOTE All the Templates listed here were stored to the Current Bank. This means that the Import operation will be applied to the Templates which were already stored at the File Save timing and will not be applied to the Templates which were not stored. If you want to import a specific Template from a file, make sure to store the edited Template before saving the file.

2 Control Template List of the Current Bank

Displays a list of the Control Templates on the Current Bank. Select a desired Control Template in this list, then click the [OK] button to return to the Edit window. You can view the contents of the selected Control Template in the 7 Preview section. You can also copy or paste a Control Template in this list.

3 File section

Clicking the icon in this section will call up the File Select dialog. In this dialog, select the file (saved previously), then execute the File Select operation so that the Templates in the file are listed. In addition, the name of the selected file appears in the window at the left of the icon.

4 [Import] button

Click this button to import the specific Control Template in the selected file to the Current Bank.

NOTE The Import operation can be applied to just one Template at a time. You can import all Templates in the selected file at the same time by operating [File] → [Open] in the Edit window.

5 [OK] button

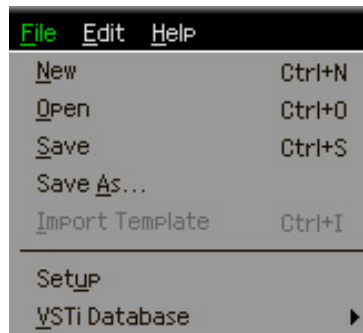
Click this button to fix the Current Bank and call up the Edit window. If the status is ONLINE, the selected bank is also transferred to the MOXF6/MOXF8.

6 [Cancel] button

Click this button to cancel editing for the Current Bank and call up the Edit window.

7 Preview

Shows the settings of the Control Template selected in the Control Template List.

[File] menu**New**

Creates and opens a new Bank file containing the default setup. This menu is available when the Edit window is shown.

Open

Opens a Bank saved in the File. This menu is available when the Edit window is shown.


Save

Saves the 50 currently edited (not stored) Templates as well as the 50 Templates which were stored to the Current Bank by overwriting the File you called up when starting your editing session. This menu is available when the Edit window is shown.

Save As

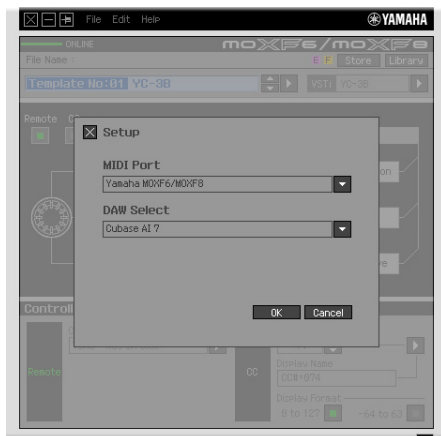
This lets you rename the File and save all the 50 Control Templates in the Current Bank and 50 currently edited Control Templates. This menu is available when the Edit window is shown.

Import Template

Imports data of a single Bank including the 50 Control Templates from a file (extension: .X6R) to the Control Template List in the File in the Library window. Selecting this menu performs the same action as clicking the icon () in the File section in the Library window. This menu is available when the Library window is shown.

Setup

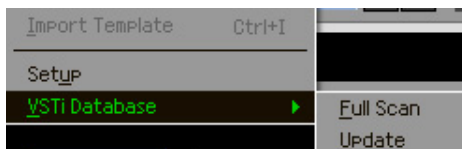
Selects the MIDI port of the MOXF6/MOXF8 and the DAW software. Selecting this menu calls up the following window. Set the parameters as necessary, then click [OK].



- **MIDI Port**
“Yamaha MOXF6/MOXF8” is automatically selected when the MOXF6/MOXF8 and the computer are connected properly via USB.
- **DAW Select**
Specify the DAW software you are currently using here.

VSTi Database

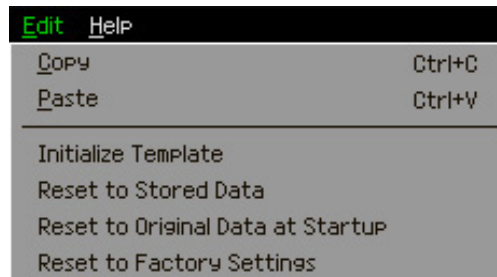
Scans through the DAW software you are using and obtains the VSTi-related information necessary for editing. This menu consists of the following two menus.



Selecting “Full Scan” scans the entire DAW software. When you scan the DAW for the first time, select “Full Scan.” Selecting “Update” scans only the sections that have been updated since previous scanning. When you've installed a new VSTi, select “Update.”

The “Full Scan” is automatically executed when you start the MOXF6/MOXF8 Remote Editor the first time or you change the DAW Select settings in the Setup window.

[Edit] menu



Copy

Copies the selected data to the clipboard.

Paste

Pastes the data on the clipboard to the specified location.

Initialize Template

Resets all settings of the selected Template in the Current Bank to the initial default values.

Reset to Stored Data

Restores all settings of all the Control Templates in the Current Bank and the MOXF6/MOXF8 instrument to the latest stored setting. Selecting this menu will call up the dialog box. On this dialog box, clicking [OK] executes the Reset operation while clicking [Cancel] returns the Editor to the original status without any operation.

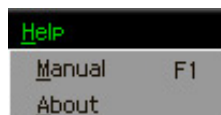
Reset to Original Data at Startup

Restores all settings of all the Control Templates in the Current Bank and the MOXF6/MOXF8 instrument to the previous settings, before the MOXF6/MOXF8 Remote Editor was opened. Selecting this menu will call up the dialog box. On this dialog box, clicking [OK] executes the Reset operation while clicking [Cancel] returns the Editor to the original status without any operation.

Reset to Factory Settings

Restores all settings of all the Control Templates in the Current Bank and the MOXF6/MOXF8 instrument to the Factory default settings. Selecting this menu will call up the dialog box. On this dialog box, clicking [OK] executes the Reset operation while clicking [Cancel] returns the Editor to the original status without any operation.

[Help] menu



Manual

Selecting this menu calls up this manual in PDF format.

About

Selecting this menu calls up information on the MOXF6/MOXF8 Remote Editor, including the version number.

Troubleshooting

Even when I click the triangular button at the right of VSTi Select/Input box in the Edit window, the VSTi plug-ins registered to the DAW software are not shown as expected.

- The MOXF6/MOXF8 Remote Editor may not properly recognize the VSTi registered in the DAW software. Select [File] → [VSTi Database] → [Full Scan] to search the VSTi information (page 11).

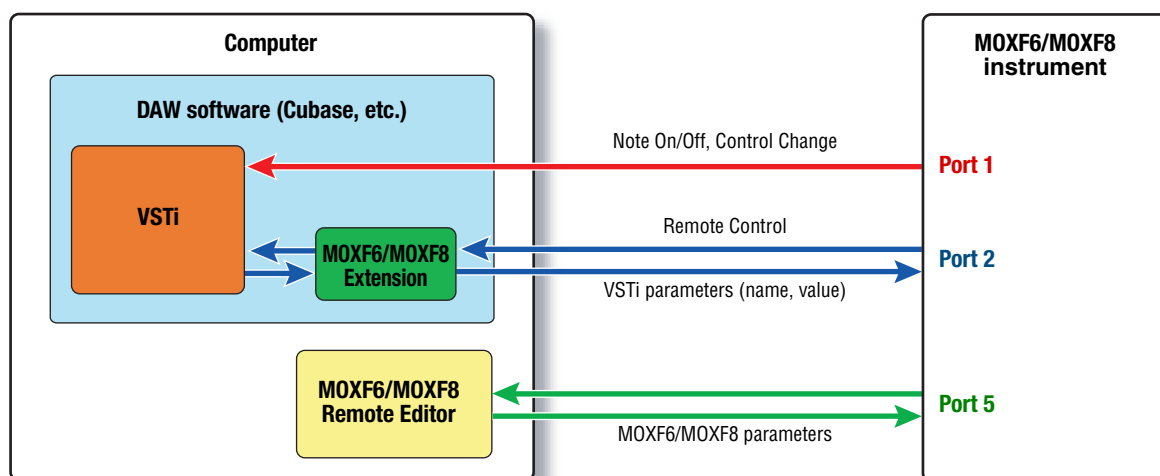
The parameters set on the MOXF6/MOXF8 Remote Editor are not displayed on the MOXF6/MOXF8.

- The display on the MOXF6/MOXF8 is based on the information sent from Cubase (see the illustration above). Start Cubase and select the corresponding VSTi within Cubase.

Even when I change the VSTi on the DAW software such as Cubase, the Control Template on the MOXF6/MOXF8 does not change corresponding to the newly selected VSTi.

- The VSTi-related information is obtained through the Extension software (see the illustration below). Make sure that the latest MOXF6/MOXF8 Extension is installed.
- Make sure that the VSTi name displayed on the DAW software is the same as the one shown in the VSTi Select/Input box (page 7).

Data transfer between the MOXF6/MOXF8 Remote Editor, MOXF6/MOXF8 and DAW software:



Turning the Knobs on the MOXF6/MOXF8 affects Remote parameters other than those intended for control.

- In Cubase, remove the checkmarks of “ALL MIDI Inputs” corresponding to MIDI Ports 2 and 5 for the MOXF6/MOXF8 instrument.

Even when I click the triangular button at the right of Control Parameter in the Edit window, the appropriate Control Parameters are not shown.

- Make sure that the VSTi is correctly selected in the VSTi Select/Input box (page 7). If you have input the VSTi name directly, make sure that the spelling is correct and the placement of spaces (if any) is correct. We recommend that you select the VSTi by clicking the triangular button at the right of VSTi Select/Input box, instead of inputting the VSTi name directly.

On the DAW software other than Cubase, the set parameters are not controlled.

- The Remote control functions are available only for Cubase. Set the Remote/CC buttons (page 7) to “CC.”
- Make sure to select a parameter except to “Cubase” on the Daw Select display of the Utility mode in the MOXF6/MOXF8 instrument.

Even when I select another track on the DAW software, the VSTi to be controlled does not change; instead, the VSTi which is assigned to the previously selected track remains under control.

- When using Cubase, select [Editing]-[Project & Mixer] on the Preferences dialog, then checkmark both “Sync Project and Mixer Selection” and “Enable Record on Selected Track.”
- When using Cubase, select “Yamaha MOXF6/MOXF8” in the Remote Device Setup window, then select Port 2 for the MOXF6/MOXF8 as the MIDI Input/Output.
- Make sure to set the MOXF6/MOXF8 instrument to the Remote mode. (page 5)