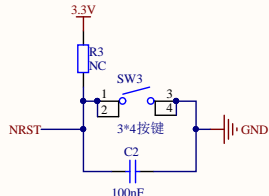
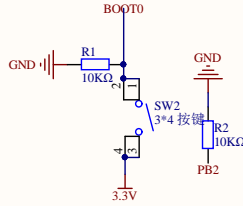


用户按键  
User KEY

V1.3 增加用户按键 KEY WeAct Studio

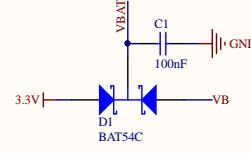


复位电路  
Reset circuit

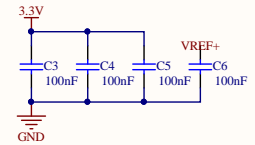
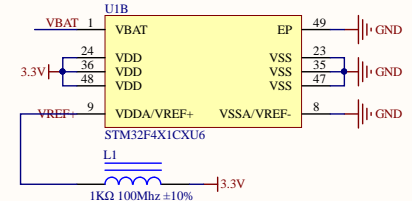


BOOT设置  
BOOT Settings

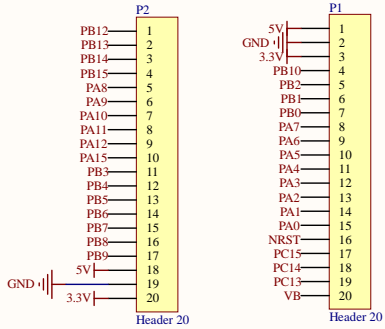
V1.2 修改BOOT跳线为BOOT0按键，BOOT1 10K下拉



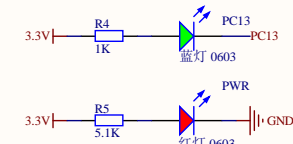
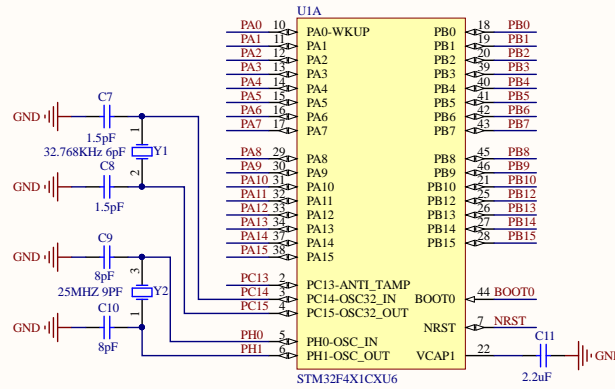
RTC电源  
RTC circuit



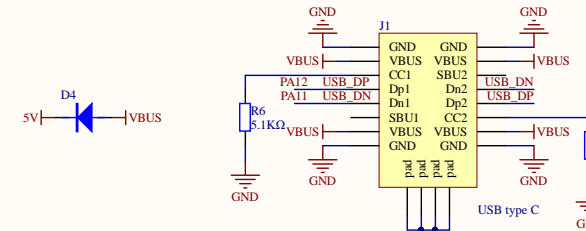
STM32电源部分  
STM32 Power supply



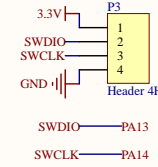
V1.1 将18由GND改为5V，支持直接驱动一路舵机



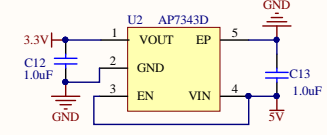
指示灯  
Indicator light



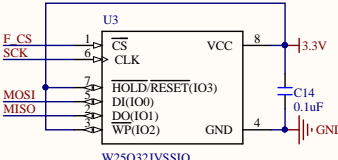
Type-C 接口  
Type-C interface



SW 调试下载接口  
SW debug download interface



5V -> 3.3V 电源转换  
5V -> 3.3V Power conversion



FLASH 自行购买焊接

V2.0 MISO脚由PA6改为PB4,方便STM32F411用户同时连接TF卡和FLASH  
V2.1 MISO脚由PB4改回PA6  
V2.2 解决带e-marker芯片的数据线不能供电问题,增加D4二极管,防止电涌

**WeAct Studio**

Title: MiniF4 Bottom有V2.2字样 V2.2

Size	Number	Revision
A3		V2.2

Date: 2020/2/29 Sheet of  
File: E:\AD19\MiniF4x1Cx.SchDoc Drawn By: zhuyix