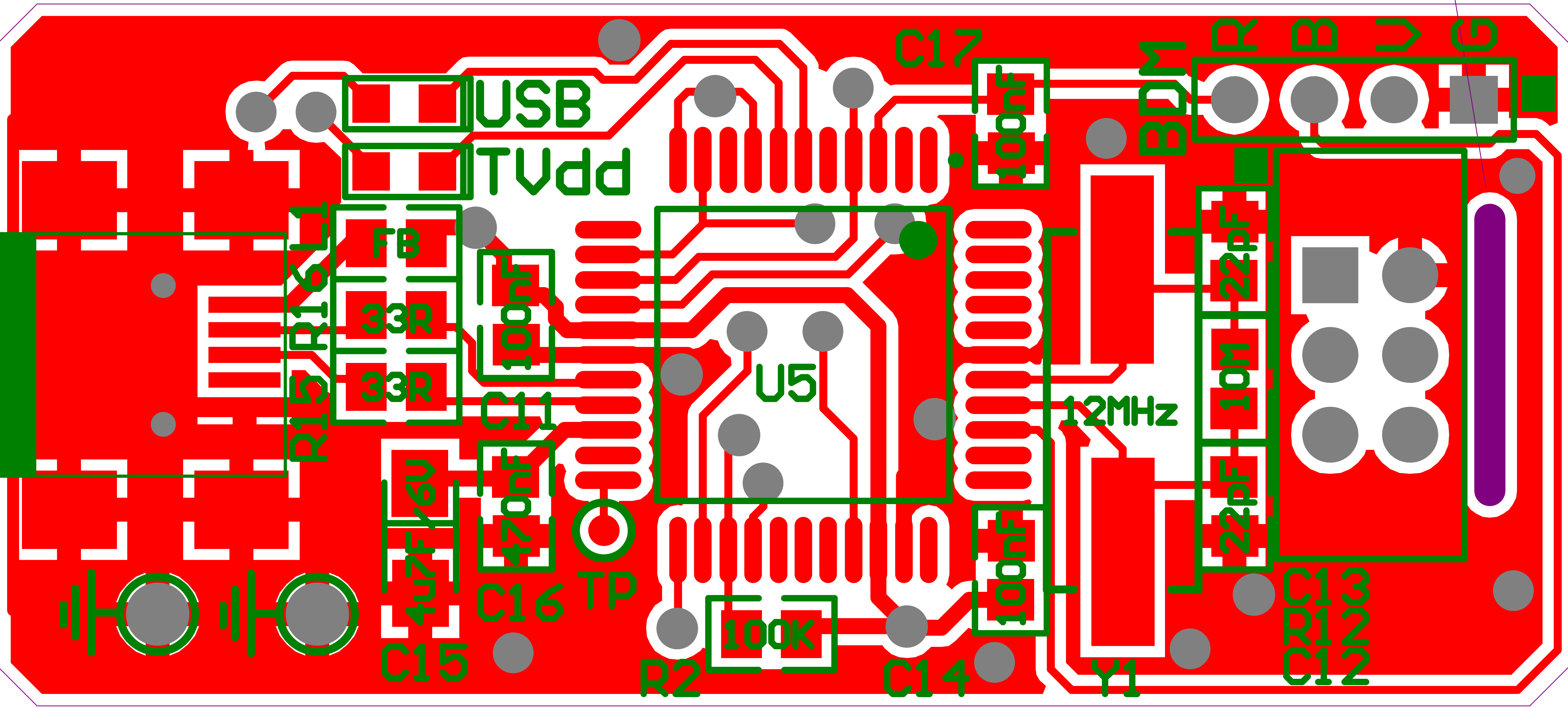


USBDM\_JMxxCLD.PcbDoc

1mm slot



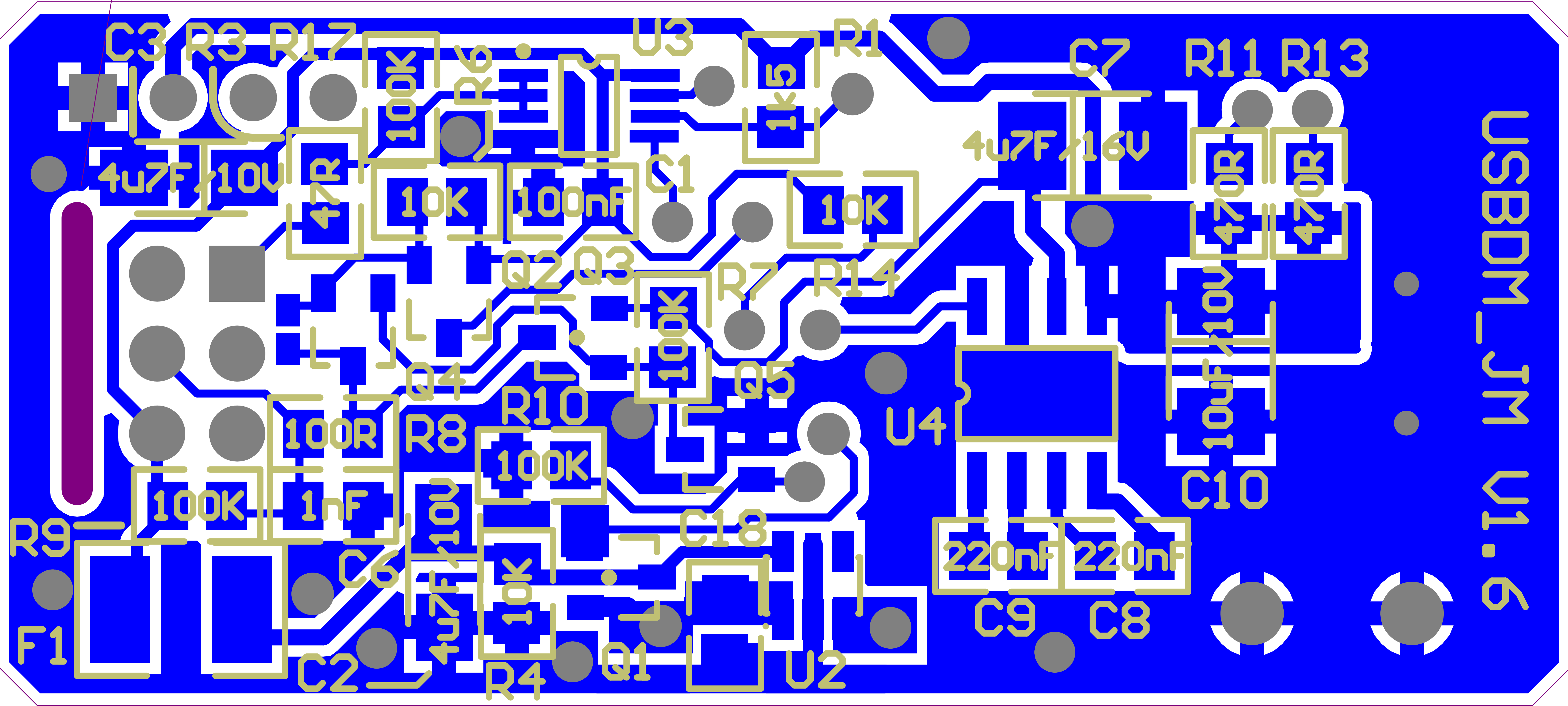
Board Outline this layer

Board Outline this layer

USBDM\_1MxCLO.PcbDoc

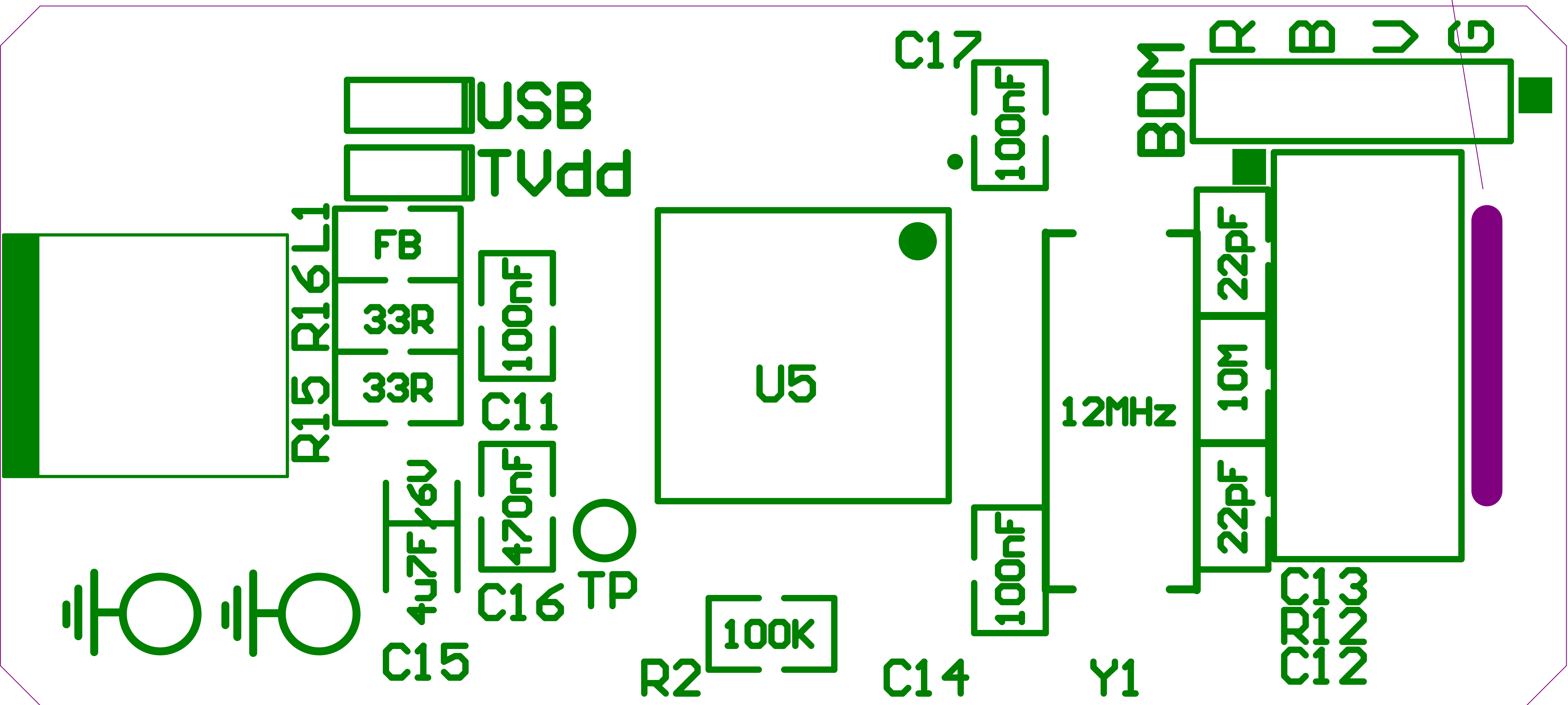
1mm 2lot

USBDM\_1M U1.6



USBDM\_JMxxCLD.PcbDoc

1mm slot



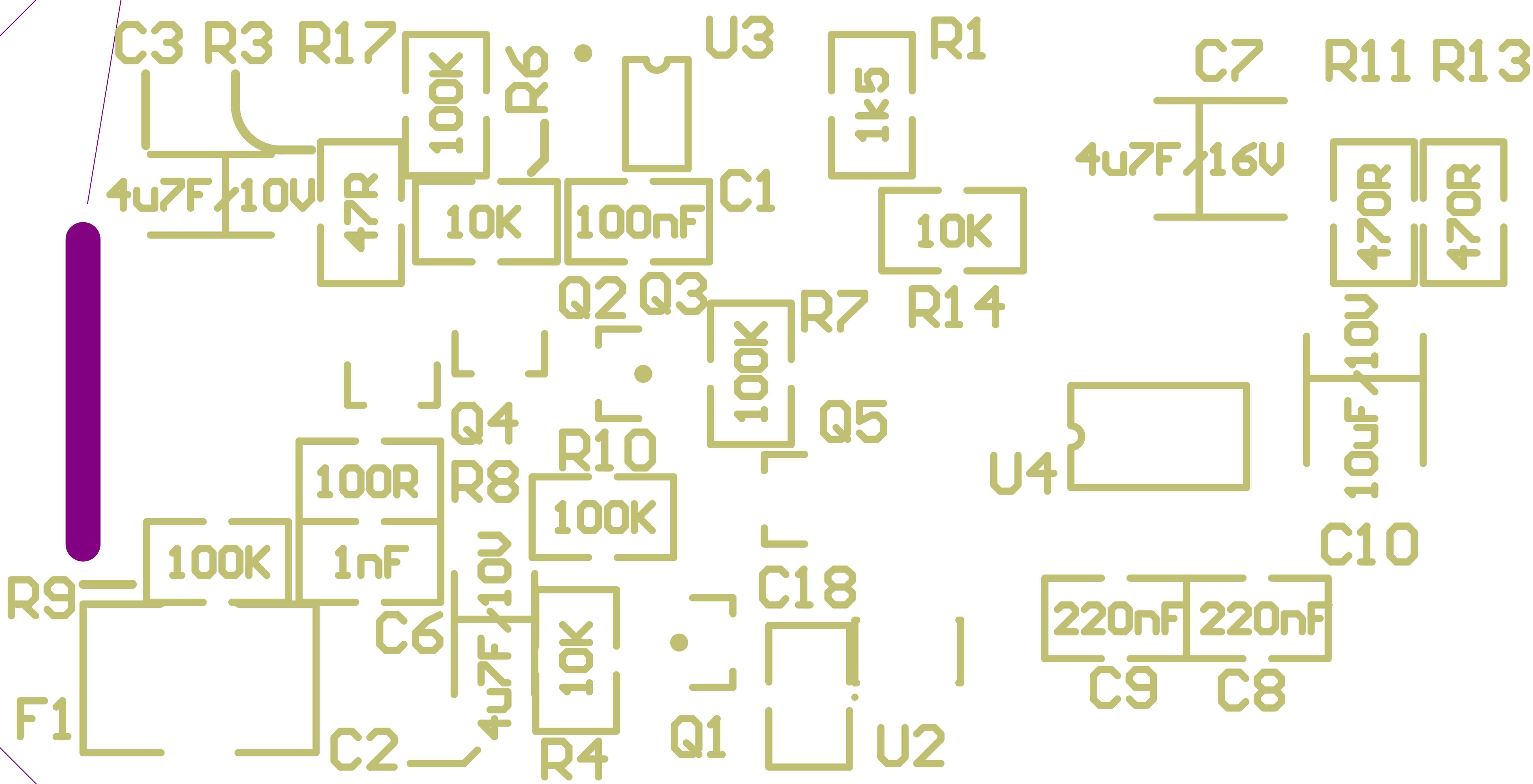
Board Outline this layer

Board Outline this layer

USBDM\_1MxCLD.PcbDoc

tol 2 mm

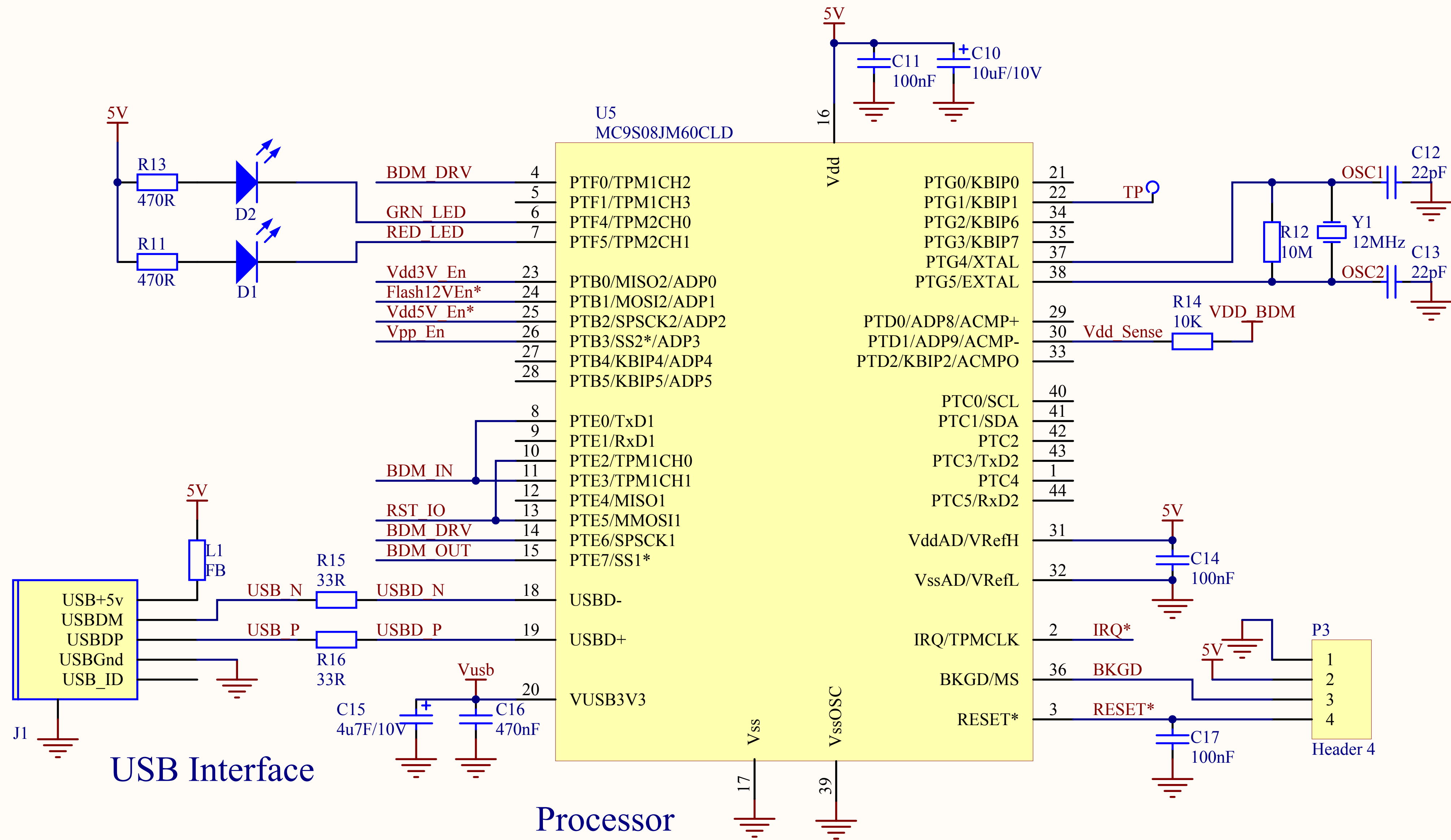
USBDM\_1M V1.6







\* V1.6 Changed Q3 to BSS84 (need Vgs(br) >>12V). No PCB change



Title			USBDM_JMxxCLD
Size	Number		Revision
A4	USBDM_JMxxCLD_p2.SchDoc		1.6
Date:	18/11/2008	Sheet 2 of 2	
File:	C:\Peter\..USBDM_JMxxCLD_p2.SchDocDrawn By:		

Bill of Material for USBDM_JMxxCLD.PcbDoc						
On 14/11/2008 at 12:17:06 AM						
Comment	Pattern	Farnell	Digi-Key	Mouser	Quantity	Components
100nF	CCNP2012-0805	1186187			4	C1, C11, C14, C17
10uF/10V	SMT_CASEB	1288264			1	C10
22pF	CCNP2012-0805	1414678			2	C12, C13
470nF	CCNP2012-0805	1288279			1	C16
1uF(X7R)	CCNP2012-0805	9527710			1	C18
4u7F/10V	SMT_CASEA	9527737			3	C2,C3,C15
1nF	CCNP2012-0805	1362553			1	C6
4u7/16V	SMT_CASEB	1358506			1	C7
220nF	CCNP2012-0805	8820139			2	C8, C9
Red SMT LED	LED-SMT-2 (0805)	5790839	516-1429-1-ND	630-HSMS-C170	1	D1
Green SMT LED	LED-SMT-2 (0805)	5790852	516-1434-1-ND	630-HSMG-C170	1	D2
Polyswitch MINISMDC014F	CR4532-1812	1345923	MINISMDC014FCT-ND	650-MINISMDC014-X	1	F1
USB_MINI_CONNECTOR	USB_Mini - SMT2	1363522	A31727CT-ND	571-1734035-1	1	J1
FB	CR2012-0805	1515717			1	L1
Header 2x3 - Male	Transition 2x3				1	P1
Header 4	HDR1X4	-	-	-	1	P3
IRLML6302	SOT23	1463266	IRLML6302PBFCT-ND	512-NDS332P	1	Q1
BSS138	SOT23	1467960	BSS138ZXCT-ND	522-BSS138TA	3	Q2, Q4, Q5
BSS84	SOT23	1094997			1	Q3
1k5	CR2012-0805	1632464			1	R1
470R	CR2012-0805	1537443			2	R11, R13
10M	CR2012-0805	9236392			1	R12
33R	CR2012-0805	9334343			2	R15, R16
100K	CR2012-0805	9332405			5	R2, R7, R9, R10, R17
47R	CR2012-0805	1632490			1	R3
10K	CR2012-0805	1638463			3	R4, R6, R14
100R	CR2012-0805	1632456			1	R8
TP	TP	-	-	-	1	TP3
LP2981AIM5-3.3/NOPB/ LP2992AIM5-3.3/NOPB	SO-G5/NS	1469129 1469139	LP2981AIM5-3.3CT-ND	595-LP2981A-33DBVTG4	1	U2
74LVC2G125DCTR	TSSO3X5-G8/X.4	1470883	296-12164-1-ND	595-SN74LVC2G125DCTR	1	U3
MAX662ACSA+	SO-G8/E2.9	9724605	MAX662ACSA+-ND	-	1	U4
MC9S08JM16/32/60CLD	QFP80P1320X1320-44M	1562859			1	U5
12MHz	XTAL_SMT	7939607	300-8548-1-ND	ABLS-12.000MHZ-B2-T	1	Y1